

Say NO TEMPLES on the FOOTPATH and
on the MIDDLE of the ROAD, obstructing
traffic , causing accidents and inside
CANAL obstructing water flow

TEMPLE

that comes like a BUBBLE
will make people GRUMBLE

create TROUBLE

burst like a BUBBLE
and will become RUBBLE

Temples on
FOOTPATH &
CANALS



Come like water
BUBBLE



Creates
TROUBLE for
TRANSPORT &
PEDESTRIANS



TRAFFIC TROUBLE

And those
constructed on
Canals cause
flooding



WATER-FLOW TROUBLE

and end up in
TROUBLE for
itself , being
pulled down



and ultimately
become **RUBBLE**



Temples, Care of
Platform &
Footpath Temples

Temples are considered sacred

That is why our ancestors

constructed temples in Gardens

and on the hill tops. Now people

either busy or lazy and have no

time to go to temple. To cater to

their needs FOOTPATHs temples

mushroom

Temples on the FOOTPATHs

Cause inconvenience to pedestrians .
Accidents occur due to people walking on the road. FOOTPATH temples create noise pollution.
Temples have been constructed on gutters. The devotees should not encourage FOOTPATH temples

Just Say NO



Temples on the footpath
and on the middle of the
road cause

1. Traffic Jams
2. Road Accidents
3. Risk and inconvenience to pedestrians
4. Air Pollution
5. Noise Pollution
6. Waste of Fuel
7. Loss of time of to road-users



care of platform TEMPLES

?

1. Convenience
2. Laziness to go to temples.
3. Non-availability of time to go to temple.
4. Worship becoming a routine and not sincere
5. Footpath temples won't be overcrowded and there will be flow

of worshippers



Temples on the road





Garbage
dumped next to
FOOTPATH
temple

We are “**PENNYWISE POUND FOOLISH**”.

We construct new concrete temples, neglecting the great, old & ancient temples.



We construct temples on FOOTPATHs, platforms, FOOTPATHs, gutters near garbage dump for other reasons, but we neglect our ancient old temples. Pedestrian cannot walk



**Care of
footpath Temples**

FOOTPATH



TEMPLES

**FOOTPATH
PILLAYAR**



**Square foot
space God**

FOOTPATH TEMPLES



**Miniature
Temple**



**Wall
Temple**

Temples in the middle of the ROADS



Temples illegally constructed on canals , roads & FOOTPATH are demolished and become just RUBBLE



on the canal bank



on the FOOTPATH



on the road



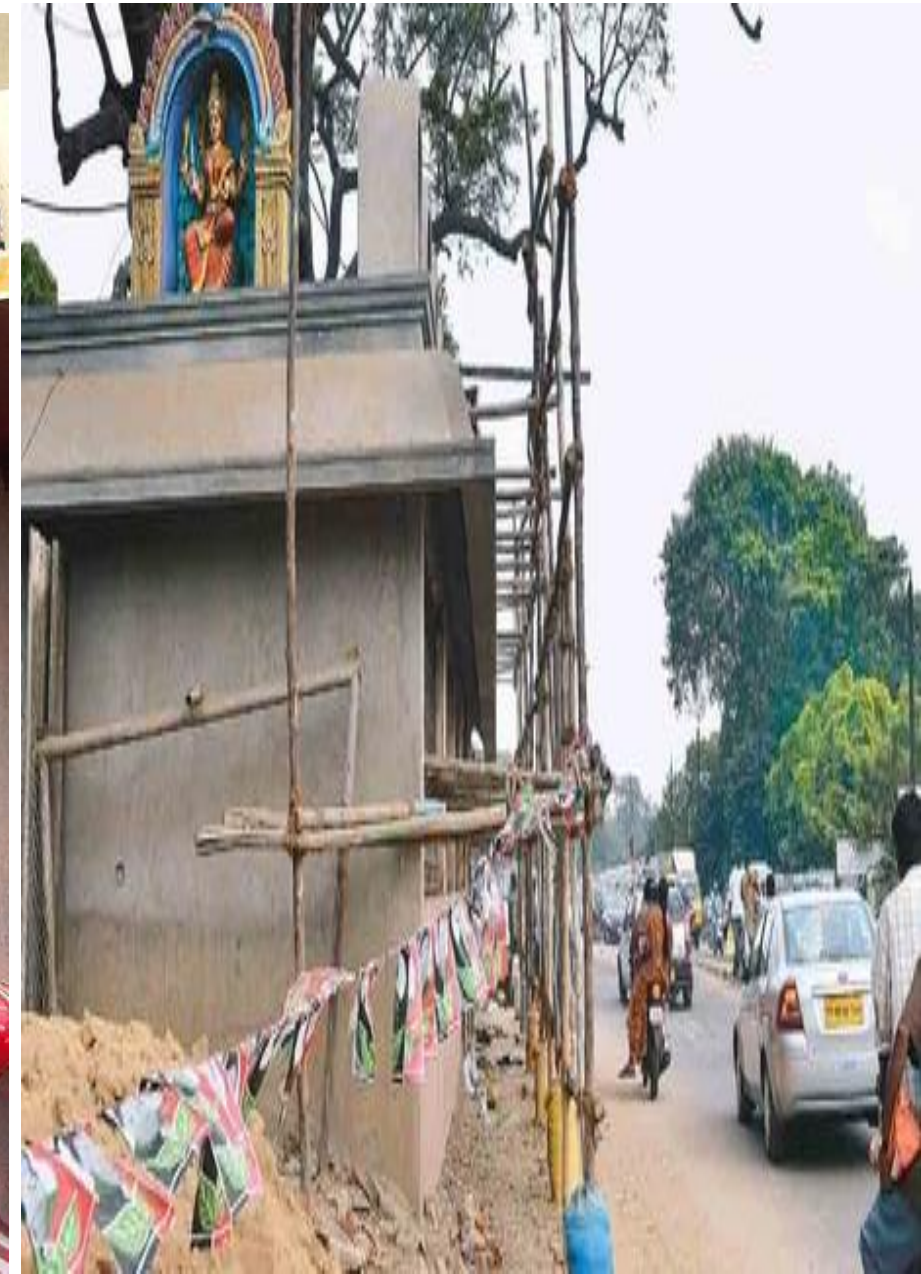
on the road



Temples on the road



Temples on the FOOTPATH



Constructed on the MIDDLE of the ROAD



TEMPLES in the MIDDLE of the ROAD



Temple on the FOOTPATH and road cause traffic jams and accidents as the drivers offer worship while driving the vehicle



Can you hurt your eye with your fingers?

Temples constructed in canals obstruct water flow and are responsible for FLOODING as well as Mosquito breeding. Flooding causes loss of lives and properties . Don't offer your worship there.

You are actually patronising an unauthorised structure which creates problems to you and fellow citizens

Temples taking half of the road space

