

**Temples Safety Problems. People come to temple seeking the almighty's blessings. But they perish due to**

**Fire  
Accidents**

**Stampedes**

**Acts of  
God**

**Extremism**

# Threats to temple & its properties

**Thefts of idols**

**Thefts of  
temple  
jewelleries**

**Theft of money  
from cash  
collection Box  
(Hundi)**

**Thefts of  
Bronze  
copperwares &  
antiques**

# Murder of the following of temples

**Temple  
Watchmen**

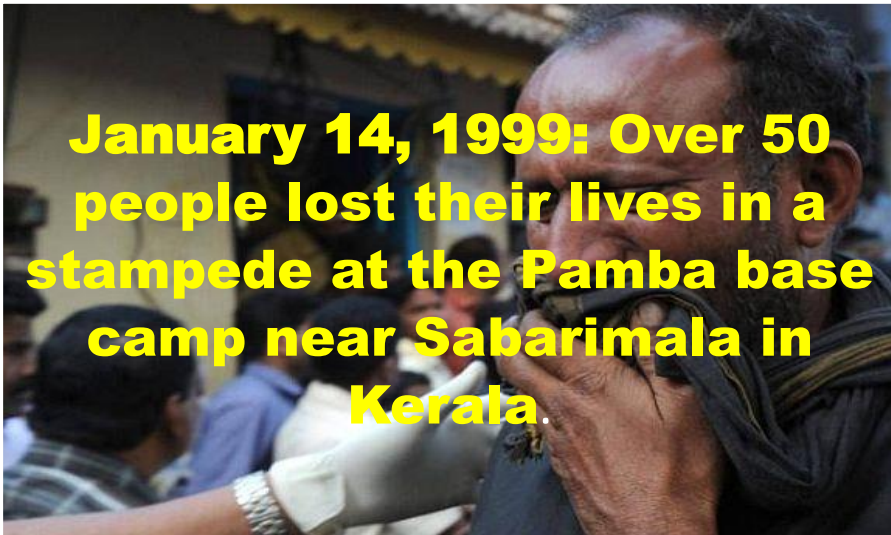
**Temple  
Priests**

**Devotees**

**Temple  
Workers**

**Rush &  
Speed  
lead  
to  
stampede**

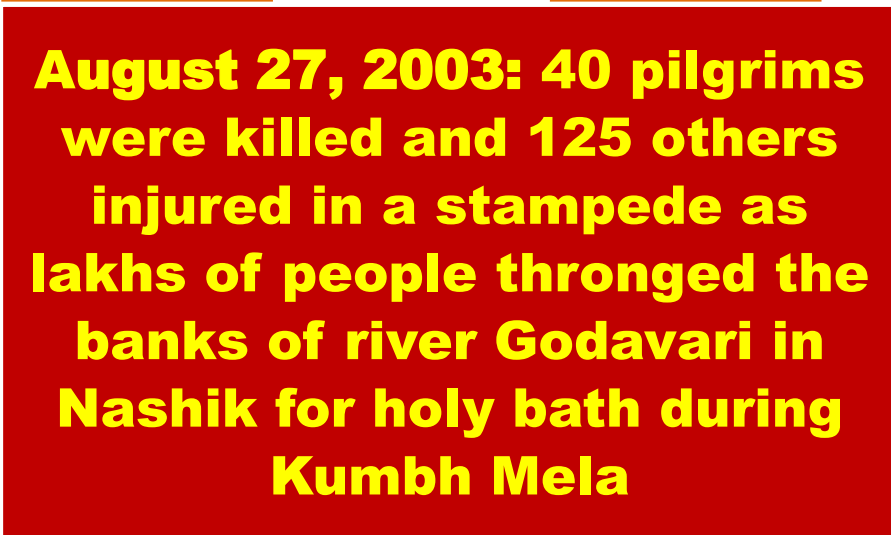
# Rush & Speed lead to stampede



**January 14, 1999: Over 50 people lost their lives in a stampede at the Pamba base camp near Sabarimala in Kerala.**



**Over 800 people were killed and 100 injured in a stampede at the Mahakumbh Mela**



**August 27, 2003: 40 pilgrims were killed and 125 others injured in a stampede as lakhs of people thronged the banks of river Godavari in Nashik for holy bath during Kumbh Mela**





**Temple  
stampedes  
claimed 700  
lives in 8 years**

# Tragedy At Ratangarh Temple: Why Do Deadly Stampedes Occur During Indian Religious Festivals?



At least 115 people have died and 100 more injured during a stampede near the Ratangarh Temple in the Indian state of Madhya Pradesh during the Navratri festivities. People died either by getting crushed, or drowning in the Sindh river below.



“Jeevan Shastra” by “ART of HEART” for Being Human Being


# Temple Fire accidents



**Kerala  
Padmanabhaswamy  
Temple:  
Fire Accident**



**Srirangam Temple  
Marriage Hall A total  
of 57 people, including  
the groom, were killed**



**Brihadeeswarar  
Temple fire kills  
48 people**



**“Jeevan Shastra” by “ART of HEART” for Being Human Being**





**The 2011 Sabarimala stampede on 14 January 2011, , killing 106 pilgrims and injuring about 100 more**



**Lord Siva at Junaghad stampede kills 5**



**A stampede at the Bhavnath Temple's annual Mahashivratri fair in Junagadh left six pilgrims dead and over 40 injured**



**Sixteen people were killed in a stampede that took place in Shanti Kunj Ashram in Haridwar**



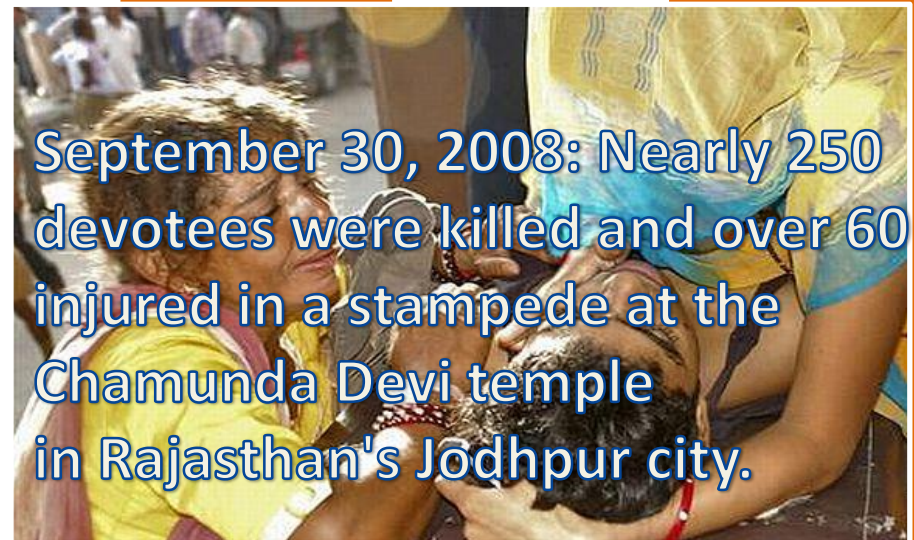
A human stampede occurred on September 30, 2008, at the Chamunda Devi temple 249 people were killed and more than 400 injured



January 14, 2011: A huge melee at the famed Sabarimala shrine in Kerala killed more than 104 devotees.



March 4, 2010: About 63 people were killed and 15 injured when a gate at Kripalu Maharaj's Ashra



September 30, 2008: Nearly 250 devotees were killed and over 60 injured in a stampede at the Chamunda Devi temple in Rajasthan's Jodhpur city.



**August 3, 2008: Over 160 people were killed and several injured in a stampede at the Naina Devi temple in Himachal Pradesh on August 3, 2008.**



**January-July 2008: Six people were killed and 12 injured in July 2008 during the annual Jagannath Yatra in Puri, Orissa.**



**January 26, 2005: At least 350 people were killed and over 200 injured in a stampede at a religious fair in Wai in Satara district of western Maharashtra on January 26, 2005.**

# Idols smuggling



“Jeevan Shastra” by “ART of HEART” for Being Human Being