

THE ORGANISATION

TEMPLE **ExNoRa**
ROLES for GOALS

The team of

SERVICE **T**TORCH **B**BEARERS

(OFFICE BEARERS)

VOLUNTEERING

TEMPLE ExNoRa

TEMPLE MARVEL

is VERY MUCH PART of

JEEVAN SHASTRA, LIFE SCIENCE,

for LIVING as HUMAN BEING

&

MANUSHYA SHASTRA, HUMAN SCIENCE

for BEING HUMAN BEING

ROLES
for
GOALS

GOALS
for
ROLES

SERVICE TORCH-BEARERS (OFFICE-BEARERS)

PRESIDENT

VICE-PRESIDENT, Maa, Mother
Everywhere for Communal Harmony

SECRETARY

JOINT SECRETARY,
Clean & Green Towns/ Villages via
ExNoRa Innovators Club / RWA ExNoRa

TREASURER

JOINT TREASURER
FUNDS ENDLESS

DIRECTOR
SAFETY

DIRECTOR
HERITAGE

DIRECTOR
ENVIRONMENT

DIRECTOR
CULTURE, FINE
ARTS & ARTS

DIRECTOR
HUMANITY
SERVICE

DIRECTOR
SERVICE to
ORGANISATION,

TEMPLE **ExNoRa**

CHAPTER: 4

SERVICE TORCH-BEARERS (OFFICE-BEARERS)

PRESIDENT

VICE-PRESIDENT, Maa, Mother
Everywhere for Communal Harmony

SECRETARY

JOINT SECRETARY,
Clean & Green Habitats via
ExNoRa Innovators Club / RWA **ExNoRa**

TREASURER

**JOINT TREASURER
FUNDS ENDLESS**

SIX DIRECTORS

Safety, Heritage,
Environment, ARTS/
Fine Arts, Humanity
& Organisation

See a separate
PPT/ e BOOK
in the WEB INDEX for

**ORGANISATION
& ROLES**

TEMPLE ExNoRa SIX DIRECTORS

DIRECTOR
SAFETY

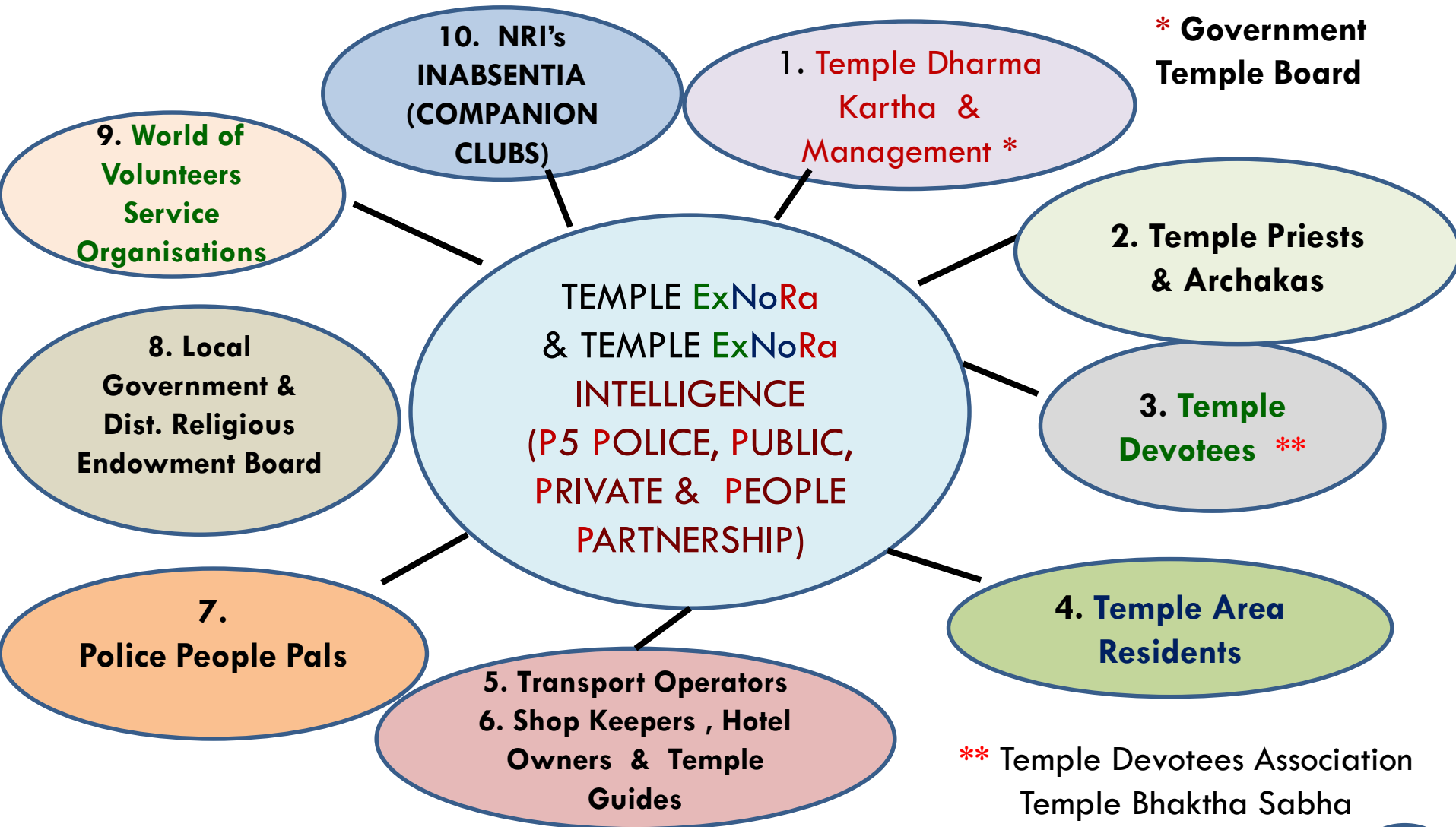
DIRECTOR
HERITAGE

DIRECTOR
ENVIRONMENT

DIRECTOR
CULTURE,
FINE ARTS &
ARTS

DIRECTOR
HUMANITY
SERVICE

DIRECTOR
SERVICE to
ORGANISATION,
TEMPLE ExNoRa



SERVICE PARTNERS

TEMPLE ExNoRa

TEMPLE PARTNERS /MEMBERS

TEMPLE ExNoRa MEMBERS

GOALS : TEMPLE & PEOPLE SAFETY / ENVIRONMENT /HERITAGE / ENVIRONMENT

1. Temple Management

Both Local & State Governments,
Dharma Karta & Temple Board

2. Temple Priests , Archakas,
workers and watchmen

3. Temple Devotees

Temple Devotees Association
Temple Bhaktha Sabha

4. Temple Area Residents

5. Transport Operators

6. Shop Keepers , Hotel Owners
& Temple Guides

7. Police People Pals (P3) &
Police, Public, Private & People
Partnership (P5)

8. Local Government & Dist.
Religious Endowment Board

9. World of Volunteers - Service
Organisations

10. NRI's INABSENTIA
(COMPANION TEMPLE ExNoRa)



**ACTIVITIES
&
DIRECTORS**

ACTIVITIES

OPTIONAL

**SUBJECT to the
NEED**

and

**AVAILABILITY of
VOLUNTEERS**

But availability

VOUNTEERS

and

VOLUNTEERING

will never be a problem .

Do you WHY?

The **WORLD BEST EXAMPLES** for motivated participation are **TEMPLE-VOLUNTEERING**. It is automatic and there is no need for motivation

All the TALENTS that you
NEED are available from
and among the TEMPLE
DEVOTEES

Make use of ExNoRa's

LATENT PATENT POTENT TALENT
FORM

LATENT PATENT POTENT TALENT FORM

Name of the DEVOTEE

CONTACT DETAILS :

Mobile , e mail, FB &
TWITTER ADDRESSES

Academic & Professional
Qualifications

POSITIONS HELD with
EXPERIENCE
in VARIED FIELDS

TALENTS in ART, FINE ARTS

HOBBIES & PASSION

You will find what all you need for the development and safety of temple and its devotees are available from and among the temple devotees .
e.g. Civil Engineers, PWD Engineers, Police Officers, Fire Officers, Safety Experts, SWM Practitioners, Rain Water Harvest Stalwarts, Heritage Specialists, Forest Officers, Horticulturists, ARTS/ FINE ARTS Artists , Accountants , Auditors, Event Managers, IT Professionals , Social Media Specialists, Sponsors Donors, Media Persons, Hygienists, Disaster Managers, Architects ,
Government Officials

ExNoRa's PATENT POTENT TALENT FORM .

Find from your devotees who are

| | | | |
|--------------------------|--------------------------|-----------------|----------------------|
| Civil Engineers | PWD Engineers | Police Officers | Fire Officers |
| Safety Experts | Waste Management Experts | RWH STALWARTS | Heritage Specialists |
| Forest Officers | Horticulturists | ARTS ARTISTS | FINE ARTS ARTISTES |
| Accountants | Auditors | Event Managers | IT Professionals |
| Social Media specialists | Sponsors | Donors | Media Persons |
| Hygienists | Disaster Mangers | Architects | Government Officials |

It is freely and voluntarily available Social Capital (Human Capital) as against monetary capital and therefore can be done at Zero Cost



When people pull together, the mammoth temple car moves. Mobilise the readily available cost-free Human-Capital

People can join and realise **CLEAN & GREEN TEMPLE** like these here



THE SOLUTIONS: Formation of Temple ExNoRa

It will be run by a team of
SERVICE TORCH BEARERS

e.g.

Golden Temple

ExNoRa

TEMPLE ExNoRa

It should be ensured that the
team of

SERVICE TORCH BEARERS

of

TEMPLE ExNoRa

has representatives of all the

TEN STAKEHOLDERS &

PARTNER ORGANISATIONS

TEMPLE ExNoRa

ROLES for GOALS

You are welcome to make minor changes according to the number of members enrolled

When you have more members, you can have any number of **H**eads **o**f **D**ivisions (**HODs**) as per the need

SERVICE TORCH BEARERS

of **TEMPLE ExNoRa**

The **ExNoRa** TEAM will comprise of

- 1. PRESIDENT (+ VICE PRESIDENT
which is OPTIONAL)**
- 2. SECRETARY(+ JOINT SECRETARY
which is OPTIONAL)**
- 3. TREASURER (+ JOINT TREASURER
which is OPTIONAL)**
- 4. DIRECTORS : SIX**
- 5. HODs: As many as needed**