

Say NO TEMPLES on the FOOTPATH and  
on the MIDDLE of the ROAD, obstructing  
traffic , causing accidents and inside  
CANAL obstructing water flow

TEMPLE

that comes like a BUBBLE  
will make people GRUMBLE

create TROUBLE

burst like a BUBBLE  
and will become RUBBLE

Temples on  
FOOTPATH &  
CANALS



Come like water  
**BUBBLE**



Creates  
TROUBLE for  
TRANSPORT &  
PEDESTRIANS



TRAFFIC TROUBLE

And those  
constructed on  
Canals cause  
flooding



WATER-FLOW TROUBLE

and end up in  
**TROUBLE** for  
itself , being  
pulled down



and ultimately  
become **RUBBLE**



Temples, Care of  
Platform &  
Footpath Temples

Temples are considered sacred

That is why our ancestors

constructed temples in Gardens  
and on the hill tops. Now people

either busy or lazy and have no  
time to go to temple. To cater to

their needs FOOTPATHs temples

mushroom

# Temples on the FOOTPATHs

Cause inconvenience to pedestrians .  
Accidents occur due to people walking on the road. FOOTPATH temples create noise pollution.  
Temples have been constructed on gutters. The devotees should not encourage FOOTPATH temples

# Just Say NO



Temples on the footpath  
and on the middle of the  
road cause

1. Traffic Jams
2. Road Accidents
3. Risk and inconvenience to pedestrians
4. Air Pollution
5. Noise Pollution
6. Waste of Fuel
7. Loss of time of to road-users



## Why POEPL patronise care of platform TEMPLES ?

1. Convenience
2. Laziness to go to temples.
3. Non-availability of time to go to temple.
4. Worship becoming a routine and not sincere
5. Footpath temples won't be overcrowded and there will be flow of worshipers



# Temples on the road







Garbage dumped  
next to FOOTPATH  
temple

We are “**PENNYWISE POUND FOOLISH**”.

We construct new concrete temples, neglecting the great, old & ancient temples.



We construct temples on FOOTPATHs, platforms, FOOTPATHs, gutters near garbage dump for other reasons, but we neglect our ancient old temples. Pedestrian cannot walk



**Care of  
footpath Temples**

# FOOTPATH TEMPLES



FOOTPATH  
PILLAYAR



Square foot  
space God

# FOOTPATH TEMPLES



Miniature  
Temple



Wall  
Temple

# Temples in the middle of the ROADS



Temples illegally constructed on canals , roads & FOOTPATH are demolished and become just RUBBLE



on the canal bank



on the FOOTPATH



on the road



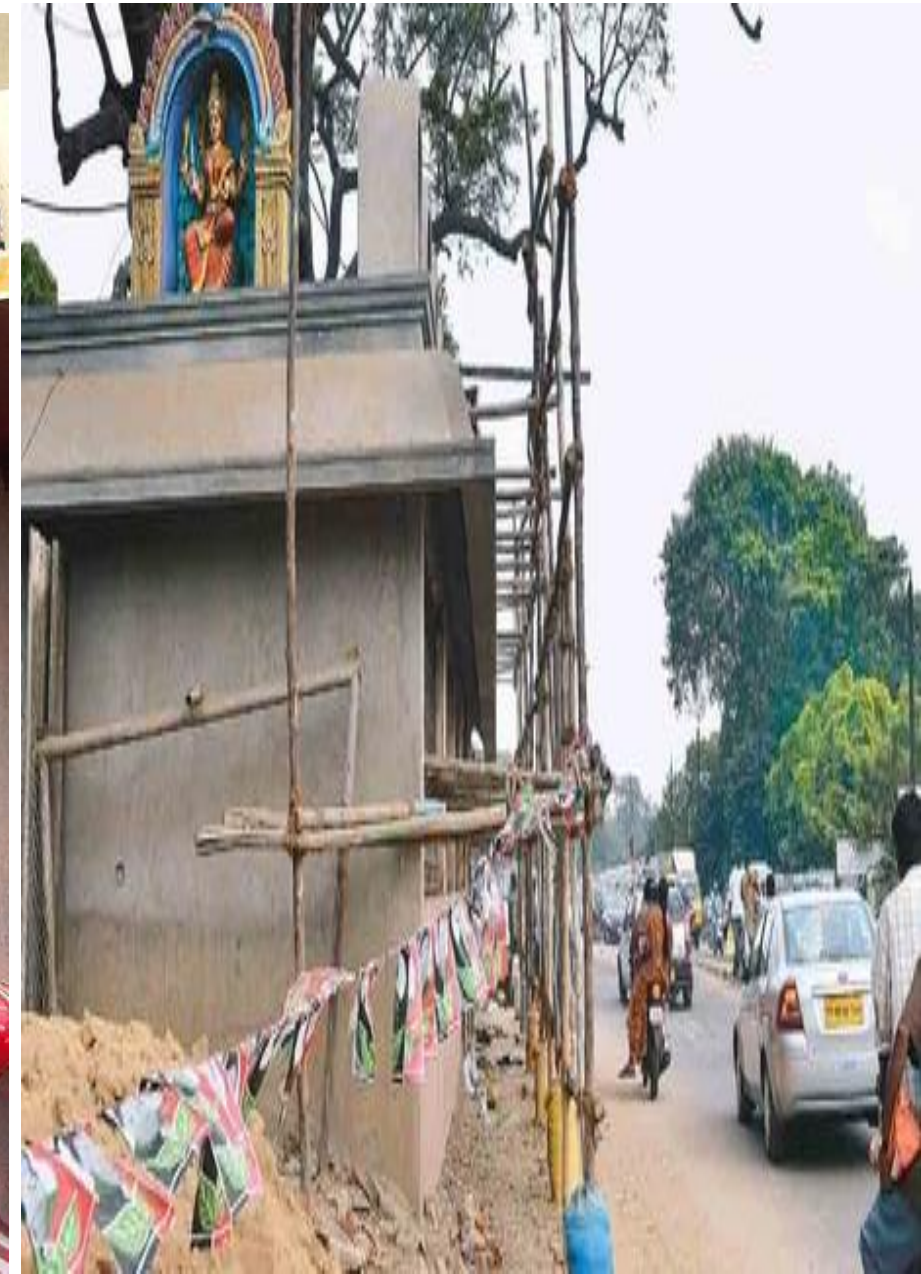
on the road



# Temples on the road



# Temples on the FOOTPATH





Constructed on the MIDDLE of the ROAD



# TEMPLES in the MIDDLE of the ROAD



Temple on the FOOTPATH and road cause traffic jams and accidents as the drivers offer worship while driving the vehicle



## **Can you hurt your eye with your fingers?**

**Temples constructed in canals obstruct water flow and are responsible for FLOODING as well as Mosquito breeding. Flooding causes loss of lives and properties . Don't offer your worship there.**

**You are actually patronising an unauthorised structure which creates problems to you and fellow citizens**

# Temples taking half of the road space

