

# Types of Landfills

What are landfills?

Landfills are facilities for the final controlled disposal of waste in or onto land.

Under the Resource Management Act 1991 (RMA), landfills must have consent conditions which are appropriate to the material they accept.

# TYPES of LANDFILL

MUNICIPAL  
SOLID  
WASTE  
LANDFILLS



LANDFILLS  
THAT  
ACCEPT  
HOUSEHOLD  
WASTE AS  
WELL AS  
OTHER  
WASTES.

# TYPES of LANDFILL



Landfills  
composed  
mainly of  
clean-fill, but  
also  
construction  
and demolition  
waste with  
light  
contaminants

# TYPES of LANDFILL

CONSTRUCTION  
AND  
DEMOLITION  
LANDFILLS



Landfills where construction and demolition materials such as wood products, asphalt, plasterboard, insulation and others are disposed to land

# TYPES of LANDFILL

**CLEAN-  
FILLS**



Landfills where clean-fill material is disposed to land.

Clean-fill material is material that when buried will have no adverse effect on people or the environment. It includes virgin natural materials such as clay, soil and rock, and other inert materials such as concrete or brick that are free of:

- combustible, putrescible, degradable or leachable components
- hazardous substances
- products or materials derived from hazardous waste treatment, hazardous waste stabilisation or hazardous waste disposal practices
- materials that may present a risk to human or animal health such as medical and veterinary waste, asbestos or radioactive substances
- liquid waste.

## **INDUSTRIAL LANDFILLS**



The level of environmental protection depends on the type of waste accepted at the facility.

Landfills that accept specified industrial wastes. In most cases industrial waste landfills are mono-fills associated with a specific industry or facility

# Requirement to register as a disposal facility

Under the Waste minimisation Act 2008, landfills that accept household waste (which is not entirely from construction, renovation, or demolition of a house) must register as a disposal facility.

Disposal facilities are subject to the waste disposal levy of \$10 per tonne of waste disposed of at the facility.

For more about the levy see [About the waste disposal levy](#).

# GARBAGE DUMP





# GARBAGE DUMP



# GARBAGE DUMP



# GARBAGE DUMP



# GARBAGE DUMP



# **Construction Site Waste Management**

An orange excavator is shown in the middle of a demolition project. The machine is positioned on a large pile of rubble, including wood, metal, and concrete. In the background, the skeletal remains of a large building are visible, with its steel framework exposed. To the right, a portion of a brick building with several windows remains standing. The sky is clear and blue.

**A Important Part of Construction  
that Deserves Attention**

© Copyright Richard Croft and licensed for reuse under CC BY-SA 2.0

# LANDFILL GETTING READY



# LANDFILL GETTING READY



# LANDFILL GETTING READY





# LANDFILL GETTING READY



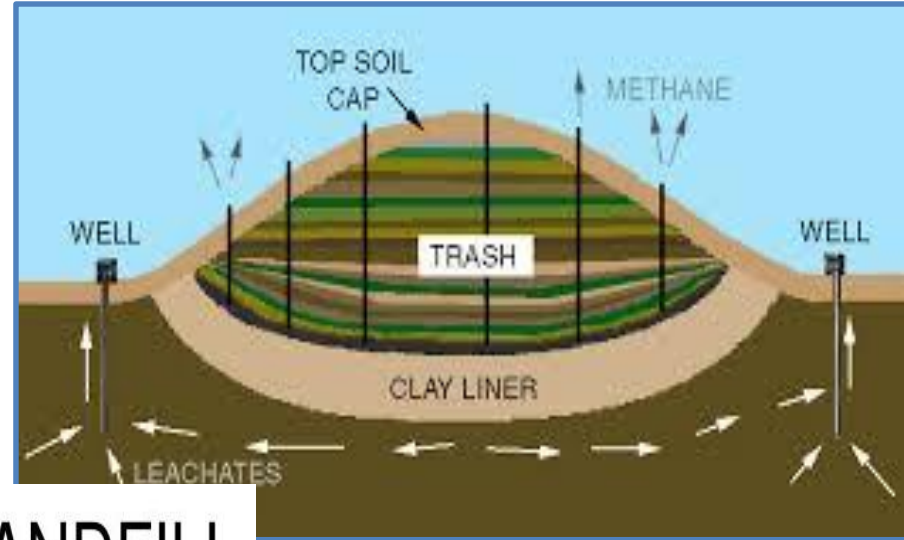
# LANDFILL GETTING READY



# LANDFILL GETTING READY



**Residual Plastic Wastes must find its way to a  
**SECURED LANDFILL**, which many nations including India  
does not have**



**SECURED LANDFILL**



# Sanitary Landfill:

