

FOOD → MUD
THE RUDE
TRUTHS



ExNoRa International

Huge Food Shortage

Expected Permanent &
Continuous Food Shortage

STEEP INCREASE IN DEMAND FOR
FOOD & SHARP FALL IN SUPPLY OF
FOOD

2020 means

CRICKET for an average Indian

It is the year India should emerge a **MODEL** Nation for a great visionary, **APJ Abdul Kalam**

For environmentalists it is the year, when Environmental **CATASTROPHES** will be at its **PEAK**

For **FOOD** production experts **FOOD** production will touch the lowest & the food demand will be twice the supply.

One meal has to be shared by two & one may get only half-a meal

Threats to farmlands due to **Nature's ANGER**

NATURE became against **HUMANS**
as **HUMANS** went against **NATURE**



Consequences of Global Warming

1. Atmosphere Warming

**RESULTING IN
MELTING OF
POLAR CAPS**



Drastic increase in atmospheric temperature

speeding up the melting of ice caps, glaciers & ice mountains

which in turn will lead to increase in sea level

which will eventually result in coastal areas going beneath water

farm lands will get inundated or will become saline



The most shocking information

Crumbling of Ice Shelves

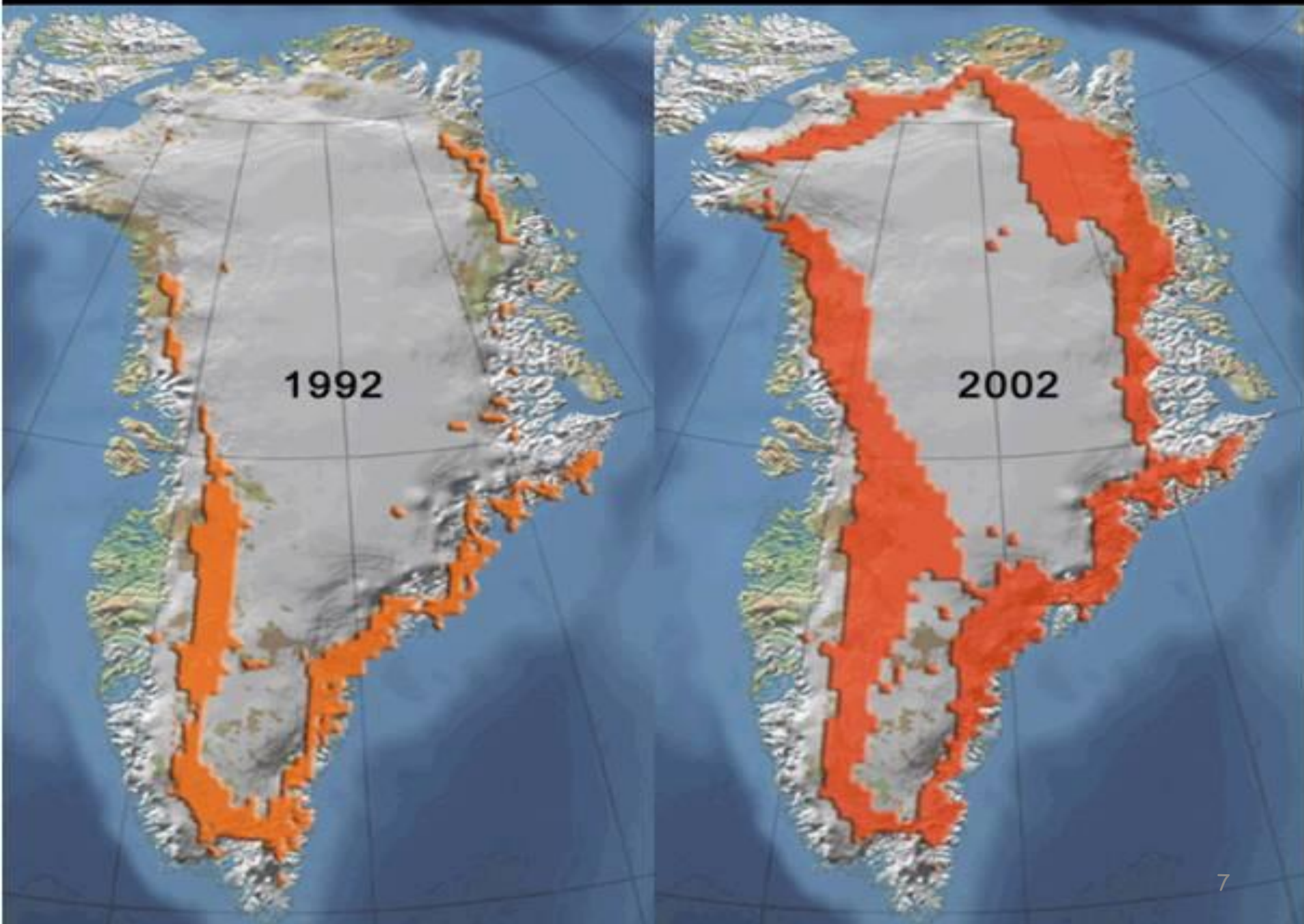


If the West Antarctic Ice Sheet were to melt and collapse into the sea, it would push the sea levels up 10 meters (more than 32 feet) and many coastal areas would completely sink beneath the ocean.

DANGER

Global Warm(n)ing

Greenland Ice Sheet Melt 1992 to 2002



1. Atmosphere Warming

Inundation & loss of Farm land due to increase in sea level .

India has 7500 km long LOW coastline.



**Indian Coastline
Length
7516.6 km**

**GUJARAT
Coastline
1,600 km
(Longest coastline)**

**TAMIL NADU
Coastline
1,076 km
(2nd longest Coastline)**

**ANDHRA PRADESH
Coastline
972 km
(3rd longest
coastline)**

**MAHARASHTRA
Coastline
720 km**

**KERALA
Coastline
590 km**

**ODISHA
Coastline
485 km**

**KARNATAKA
Coastline
300 km**

**WEST BENGAL
Coastline
158 km**

Tropical Forests & Grass Lands will disappear.

Cereals yields will decline

Ground water level will go

down heat will increase steeply

This will lead to spreading of heat related diseases



2. Soil Warming



THE MINDBOGGLING PARADOX

Global Warming causes excess Soil Warming and affects **AGRICULTURE**

AGRICULTURE is a large scale **CAUSE** for **Global Warming**

Climate Change and **AGRICULTURE** are interrelated processes, both of which take place on a global scale.

Global Warming is projected to have significant impacts on conditions affecting agriculture, including temperature, carbon dioxide, glacial run-off, precipitation and the interaction of these elements.

These conditions determine the carrying capacity of the biosphere to produce enough food for the human population and domesticated animals.

THE MINDBOGGLING PARADOX

continued

At the same time, agriculture has been shown to produce significant effects on climate change, primarily through the production and release of greenhouse gases such as carbon dioxide, methane, and nitrous oxide, but also by altering the Earth's land cover, which can change its ability to absorb or reflect heat and light, thus contributing to radioactive forcing.

Land use change such as deforestation and desertification, together with use of fossil fuels, are the major anthropogenic sources of carbon dioxide; agriculture itself is the major contributor to increasing methane and nitrous oxide concentrations in Earth's atmosphere.

3. Sea Warming



Warming oceans are pushing fish toward the poles in search of cooler waters, according to a study that raises new concerns that climate change is robbing the tropics of a primary source of income and nutrition.

Loss of sea food & **Sea Warming** making **Wind Warmer**

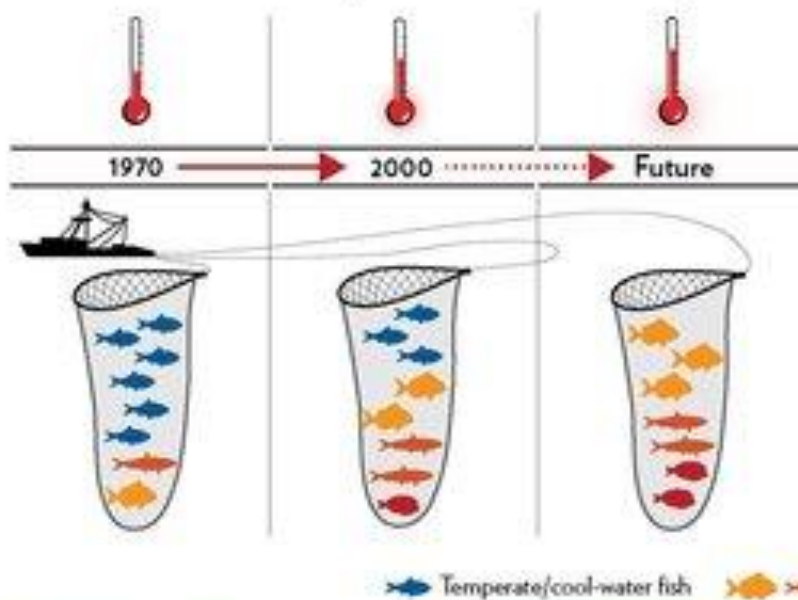
Warming Oceans Are Reshaping Fisheries

Marine species are gradually moving away from the equator into cooler waters, and, as a result, species from warmer waters are replacing those traditionally caught in many fisheries worldwide. Scientific studies show that this change is related to increasing ocean temperatures.

Subtropic and temperate ocean



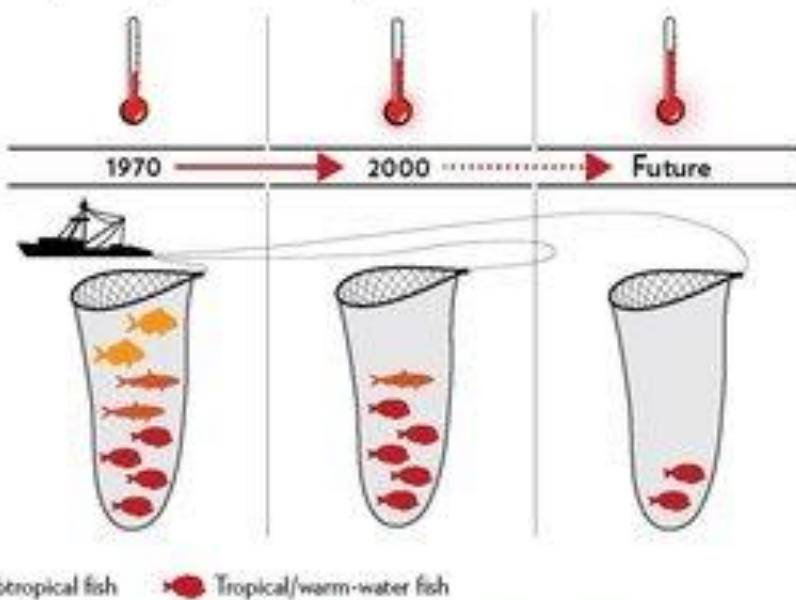
From 1970 to 2006, as open temperatures were rising, catch composition in the subtropic and temperate areas slowly changed to include more warm-water species and fewer cool-water species.



Tropics



In the tropics, the catch composition changed from 1970 to 1980 and then stabilized, likely because there are no species with high enough temperature preferences to replace those that declined.



These shifts could have negative effects including loss of traditional fisheries, decreases in profits and jobs, conflicts over new fisheries that emerge because of distribution shifts, food security concerns, and a large decrease in catch in the tropics.

This graphic presents concepts from: Cheung, WWL, R. Watson and D. Pauly. 2013. Signature of ocean warming in global fisheries catch. *Nature*. DOI:10.1038/nature12156.

The thermometers are representative of trends in ocean temperature over time and the fish are representative of trends in catch composition over time. They do not represent specific values.

Please consult the results section of Cheung et al. (2013) for exact data points.

Graphic by The Pew Charitable Trusts' ocean science division. www.pewenvironment.org/research-programs



Sea Warming - a shocking news

It is not just a case of dwindling fish population & migration of fish population towards south near Antarctic . It is much more than that

Global warming is likely to shrink the size of fish by as much as a quarter in coming decades, according to a ground-breaking new study of the world's oceans.

In other words the fish will drastically shrink in its size

The reduction in individual fish size will be matched by a dwindling of overall fish stocks, warned scientists, at a time when the world's growing human population is putting ever greater pressure on fisheries.

Sea Warming



Scientists fear declining Arctic sea ice and warming waters may have caused an unprecedented mass migration of thousands of walrus from the ice floes to dry land along Alaska's coast.

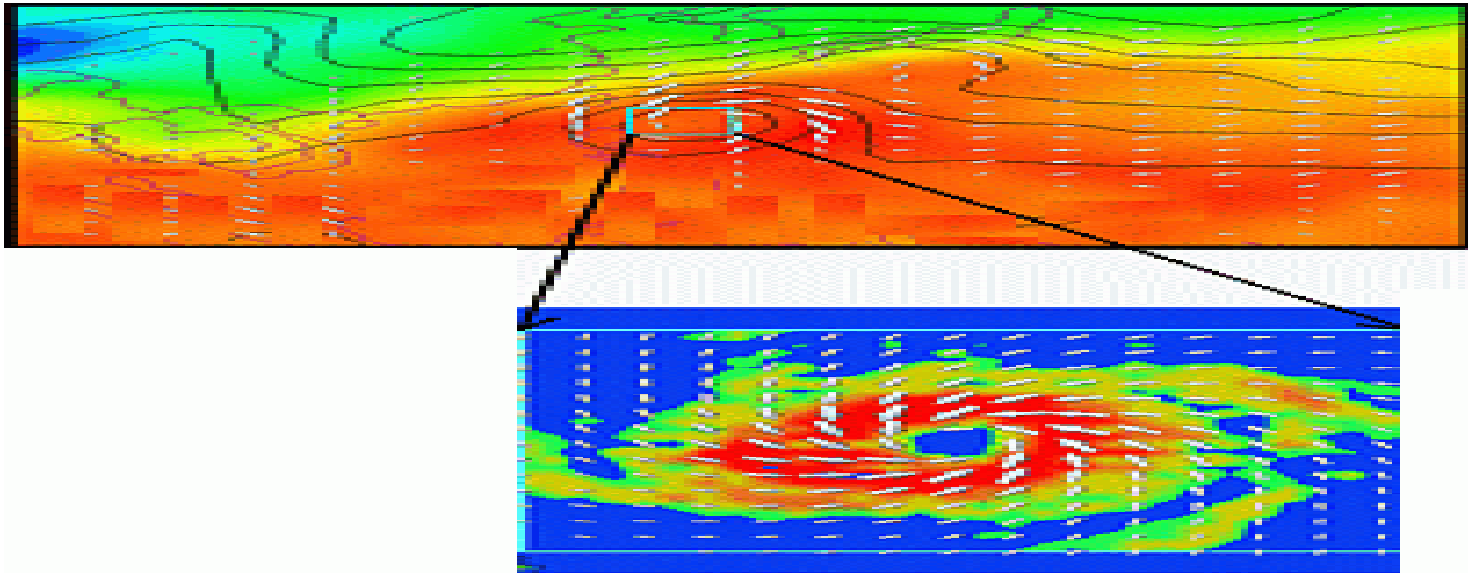
4. Wind Warming

Atmosphere, Soil & Sea Warming lead to Wind Warming

Wind Warming will make cyclones, hurricanes & typhoons more violent, virulent, volatile & frequent.

Wind will cause destruction agriculture and forests including uprooting of fruit bearing trees.





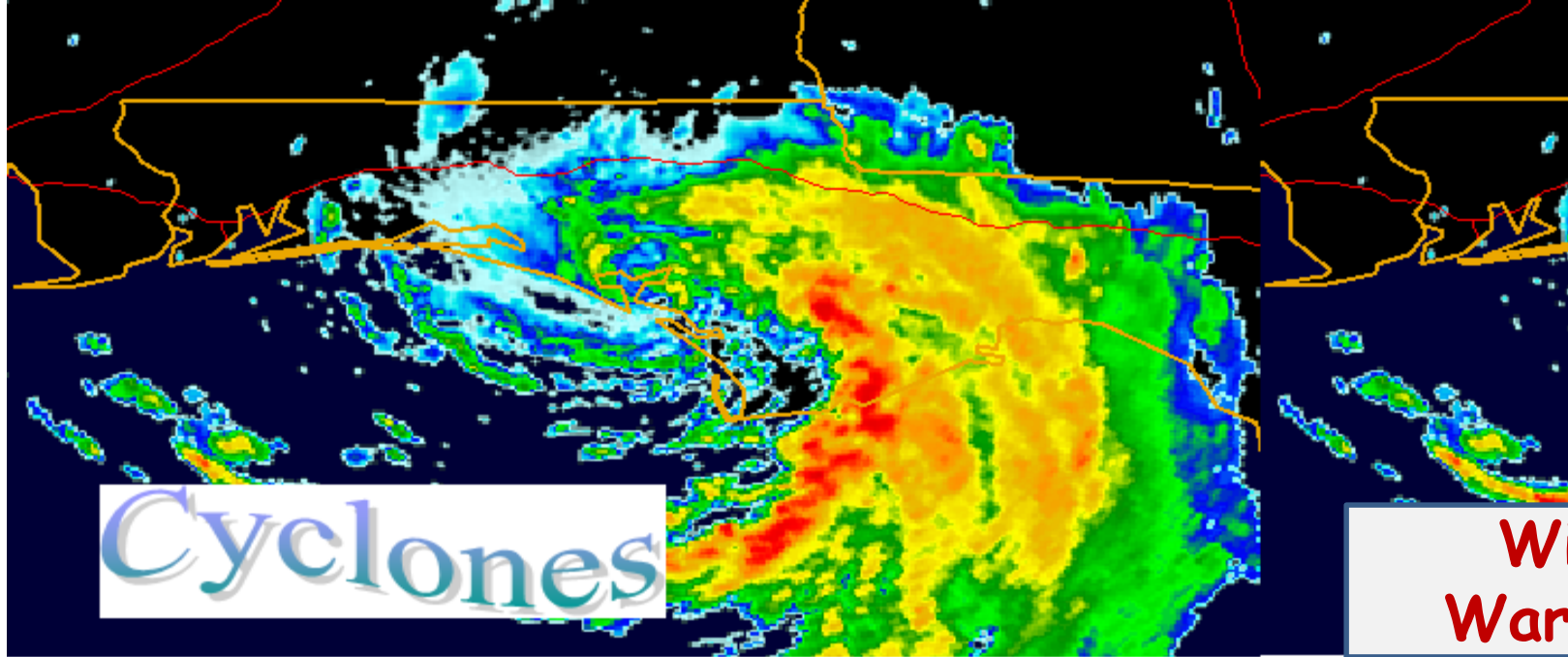
GLOBAL WARMING CAUSES WIND WARMING WHICH CAUSES STORMS

The above picture show a model how a cyclone is generated by the temperature difference and the wind flow caused by the warmth of the ocean .

Typhoons play a significant role in distributing the ocean's heat.

Oceans which cover two-thirds of the planet's surface and absorbs massive amounts of heat from the atmosphere.

Cyclones whip up the sea like the spinning steel blades of a food mixer



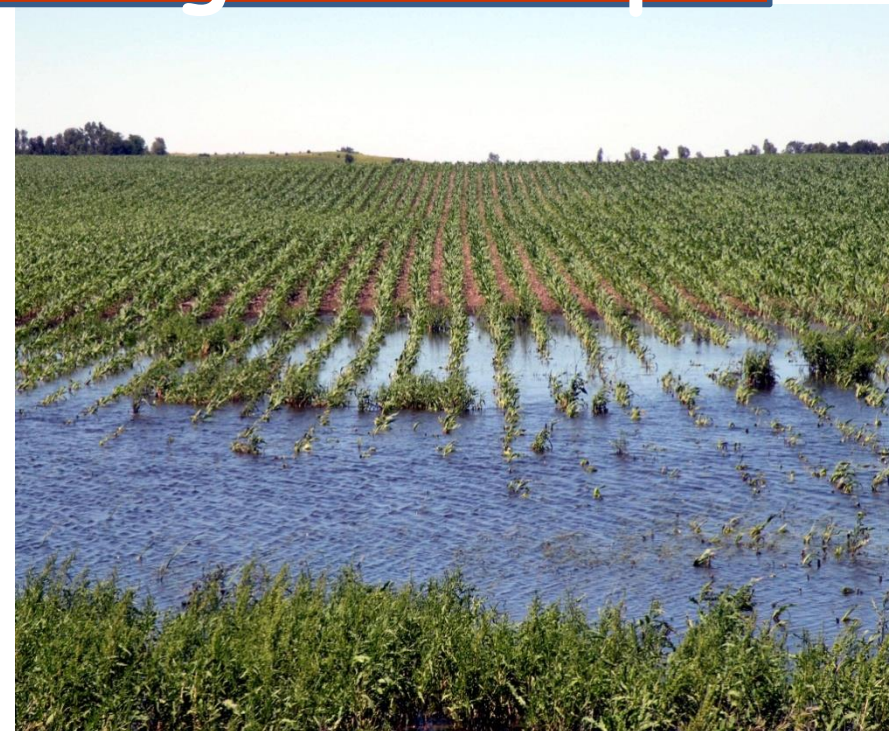
Scientists have long studied the relationship between warmer sea surface temperatures and cyclonic, slowly spinning storms in the Atlantic Ocean, but the new study attempts to project how many of the most damaging hurricanes could result from warming air temperatures as well

(Reuters) - The number of Atlantic storms with magnitude similar to killer Hurricane Katrina, which devastated the U.S. Gulf Coast in 2005, could rise sharply this century, environmental researchers reported on Monday.

Wind Causing damage of trees



Wind Causing damage of Crops



2020 AD will witness serious food-shortage & will see Food & Water Civil War

1. Soil warming will cause less farm output

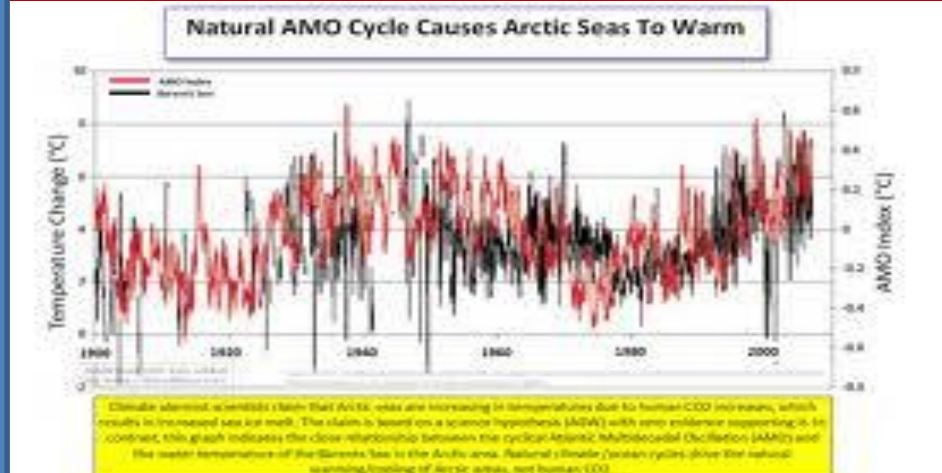


Soil Warming measuring meter

Soil Warming



2. Sea Warming will kill fishes & result in lesser fish production



Sea Warming



What is soil degradation?

Soil degradation is when soil deteriorates because of human activity and loses its quality and productivity

It happens when soil loses its nutrients, or its organic matter.

It also happens when the Soil, structure breaks down, or it becomes toxic from pollution.

The primary cause of soil degradation is erosion, but compaction, salinization, and depletion by nutrient demanding crops may also cause degradation.

Soil degradation is which the movement of soil particles from one place to another by wind or water, is considered to be a major environmental problem.

Erosion has been going on through most of earth's history and has produced river valleys and shaped hills and mountains.

Such erosion is generally slow, but the action of man has caused a rapid increase in the rate at which soil is eroded (ie. a rate faster than natural weathering of bedrock can produce new soil).

This has resulted in a loss of productive soil from crop and grazing land, as well as layers of infertile soils being deposited on formerly fertile crop lands; the formation of gullies; siltation of lakes and streams; and land slips.

Man has the capacity for major destruction of our landscape and soil resources.

Hopefully he also has the ability to prevent and overcome these problems.

FARMLAND CANCER DUE TO USE OF CHEMICAL -PESTICIDE



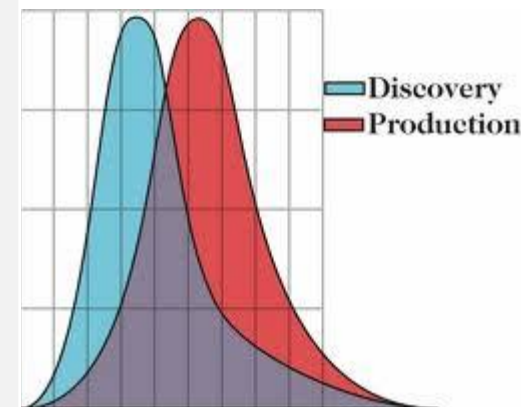
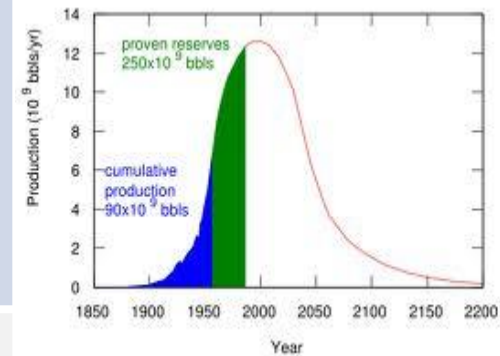
Needs no explanation



6. Peak Oil leading to Peak Fertilisers & Peak Fertilizers leading to Peak Food due to STEEP DROP in Agricultural Produces

Peak oil is the point in time when the maximum rate of global Petroleum extraction is reached, after which the rate of production enters terminal decline.

This will lead to psychological pressures, due to which there will be step escalation of Petroleum Products, which in turn will lead to Peak Fertilisers followed by acceleration of price of Fertilisers.



Know all about **PEAK OIL**
Hyperlink Page

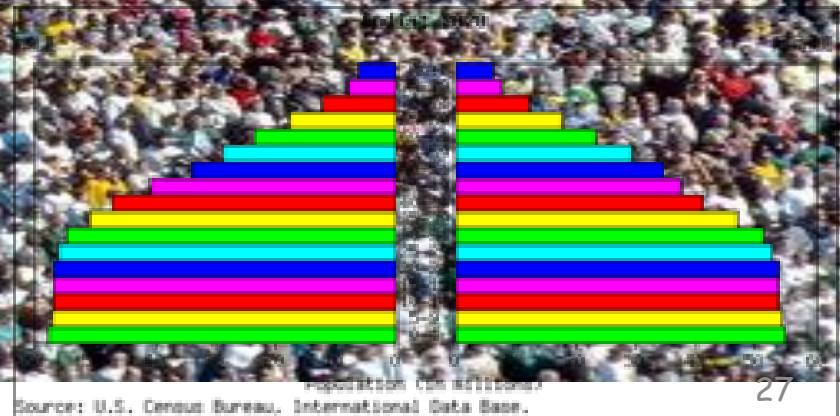


5. Population Explosion

Danger

More Stomachs & less food, what will happen?

India Population by 2020 will touch a whopping 1.3 billion



POPULATION GROWTH SLIPS BUT...

Figures on the intervening midnight of February 28 and March 1. Source: Census 2011



HOW WE GREW

Compared with the growth in 2001

17.2%

18.1%



Male

Female

TOTAL: 17.6%

BY HOW MUCH WE GREW

Population rise in a decade

181 million



Slightly lower than the population of Brazil

GROWTH RATE PATTERNS

Population decadal growth (in %)



NOTABLE GROWTH RATE DIPS (in %)

Population rise in a decade



OVERALL SEX RATIO

Females per 1000 males



MALES
FEMALES

CHILD SEX RATIO

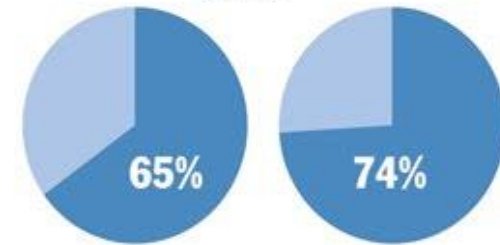
Girls aged 0-6 per 1000 boys



BOY
GIRL

LITERACY TOTAL

Total Literacy



2001 2011

	2001	2011
Male	75%	82%
Female	54%	65%

DENSITY

Persons per sqkm



Graphic: RA

WHAT IS URBANIZATION ??

❖ **Urbanization** is the physical growth of urban areas as a result of rural migration and even suburban concentration into cities, particularly the very large ones.

❖ When India got her independence , the urban area was less than 34%. By **2050** it is predicted that **64.1%** and **85.9%** of the developing and developed world respectively will be **urbanized**.

❖ Urbanization will lead to loss of huge chunk farmlands and villages losing their charm & natural beauty

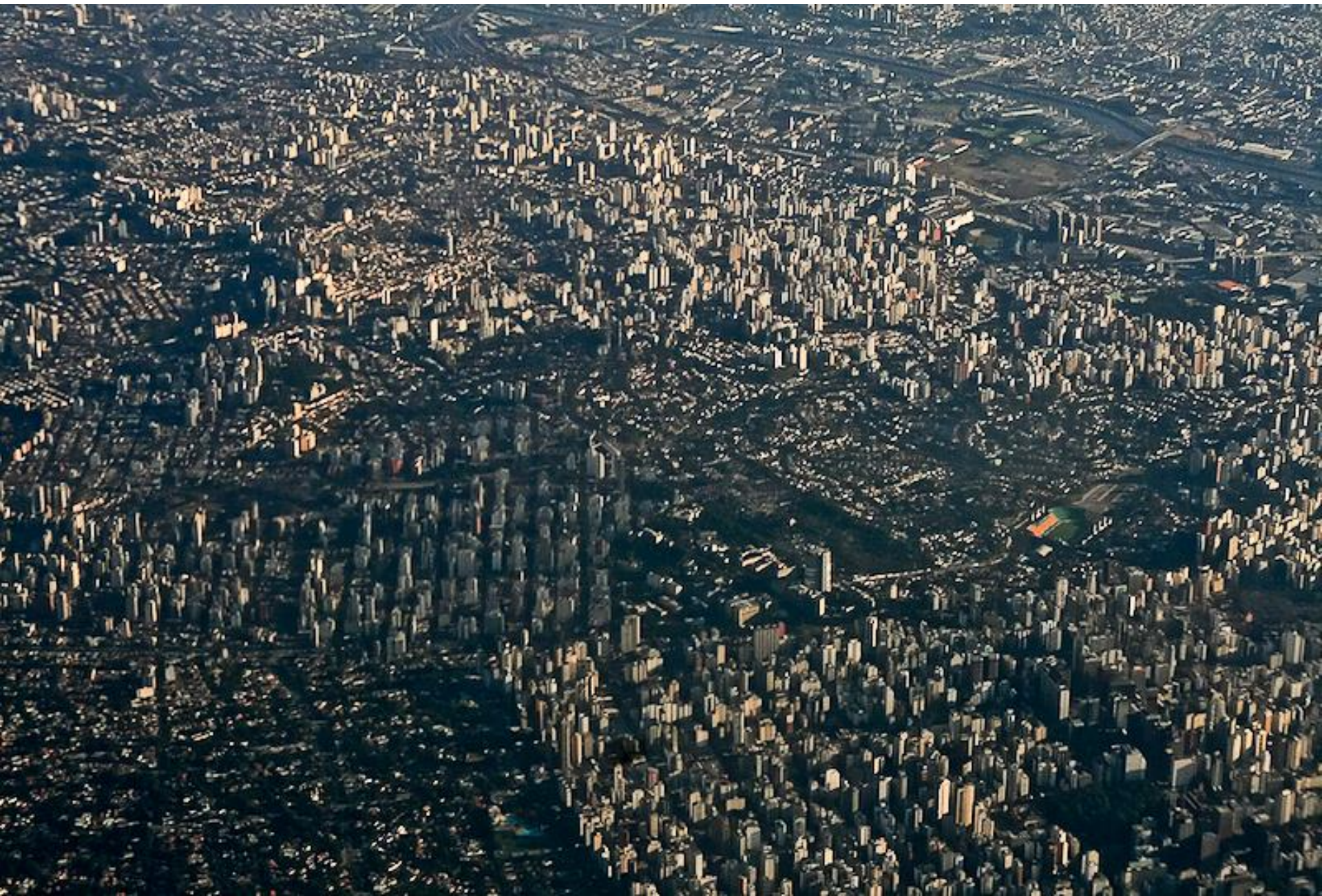
FARMLAND BECOMING BUILDING LAND



CONSTRUCTION OF BUILDINGS on FARMLANDS



CONCRETE JUNGLES



4. Murder of Farm Lands

Due to accelerated urbanisation, we have Land Cancer. Farm Lands becoming housing and industry land. Instead of crops, buildings grown. The agricultural production will drop down by 20% by 2020 due to shrinking of farm lands.





Club house



Commercial complex



Swimming pool



Parks and play areas



The Indian Public School (ICISSE)



Restaurant

**WHAT
LIFE
CAN BE.**

Relaxing. Idyllic. Fulfilling.

A new Lay Out with tall building proudly says what LIFE can be ?

But it does not say what LIFE is going to be . May be man has to innovate plastic RICE & Eat

Murder of Farm Lands begins with Layouts



Murder of Farm Lands for Layouts Continues



1200 Colleges & Schools on Farmlands in last 12 years



1200 Colleges & Schools on Farmlands



**Welcome SIPCOT
Industrial Estates
& goodbye to
farmlands & food
to EAT**



ALAS ! Farmers are not now on Farmland . But are 24 hours on streets to protect their farmland which is their bread & butter

Thervoy Kandigai is another Nandigram happening near Chennai. Thervoy Forest, Lifeline of Thervoy Kandigai was cared and protected for more that 200years by the local village.

This protected forest was adopted by the Tamilnadu government in the year 2008 and was chopped off to facilitate setting up factory for Michelin Tyres, World's Largest Tyre manufacture, a Beer Factory and a Glass Factory.





1. Novel agitation: Farmers of Kumbuliampatty and villages surrounding Perundurai SIPCOT industrial estate staging a protest against taking over of their land

2. ERODE: Residents of Kambuliampatty and other villagers neighbouring Perundurai SIPCOT Industrial estate staged a protest at the village against the State Government's proposal to expand the estate.

3. Covering their mouth with black band, the villagers wanted the Government to give up the plan, which if implemented, they said, would affect 1,000 families that were dependent on agriculture.

4. Almost all the 1,000 families had very small land holdings that served as the source of their livelihood

5. In addition to the farmers' families, 1,500 agriculture labourers who were on the land would also lose their livelihood.

Farm Estates are fast becoming Industrial Estates



Murder of Farm Lands for Laying Roads



CONSTRUCTION OF ROADS ON FARMS LAND



Airport

Land acquisition for second airport



Some of the villages identified for acquiring land for second airport



௬.2000 கோடியில் பிரம்மாண்ட 'கிரீன் பீல்ட் ஏர்போர்ட்'

புது திருச்சி:

நாடுமுழுதும் தனது நான்காவது, ௬.2000 ஆயிரக்கோடி ரூபாயில் கட்டப்படும் பெரும்புகழ் பெற்றிருக்கும், பல்வேறு கோரிக்கைகளை உள்ளடக்கிய திட்டம் தீர்மானிக்கப்பட்டுள்ளது. பல்வேறு கோரிக்கைகளை உள்ளடக்கிய திட்டம் தீர்மானிக்கப்பட்டுள்ளது.

புது திருச்சி:

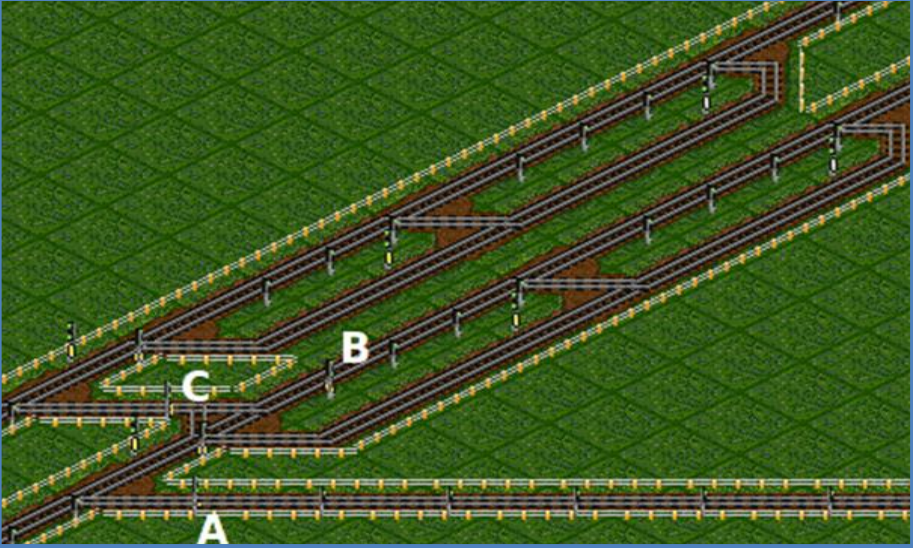
நாடுமுழுதும் தனது நான்காவது, ௬.2000 ஆயிரக்கோடி ரூபாயில் கட்டப்படும் பெரும்புகழ் பெற்றிருக்கும், பல்வேறு கோரிக்கைகளை உள்ளடக்கிய திட்டம் தீர்மானிக்கப்பட்டுள்ளது. பல்வேறு கோரிக்கைகளை உள்ளடக்கிய திட்டம் தீர்மானிக்கப்பட்டுள்ளது.

நாடுமுழுதும் தனது நான்காவது, ௬.2000 ஆயிரக்கோடி ரூபாயில் கட்டப்படும் பெரும்புகழ் பெற்றிருக்கும், பல்வேறு கோரிக்கைகளை உள்ளடக்கிய திட்டம் தீர்மானிக்கப்பட்டுள்ளது. பல்வேறு கோரிக்கைகளை உள்ளடக்கிய திட்டம் தீர்மானிக்கப்பட்டுள்ளது.

நாடுமுழுதும் தனது நான்காவது, ௬.2000 ஆயிரக்கோடி ரூபாயில் கட்டப்படும் பெரும்புகழ் பெற்றிருக்கும், பல்வேறு கோரிக்கைகளை உள்ளடக்கிய திட்டம் தீர்மானிக்கப்பட்டுள்ளது. பல்வேறு கோரிக்கைகளை உள்ளடக்கிய திட்டம் தீர்மானிக்கப்பட்டுள்ளது.

**Proposed Huge Airport by name
Green Field on Green field
(Farm land)**

CONSTRUCTION OF RAILWAYS ON FARMS



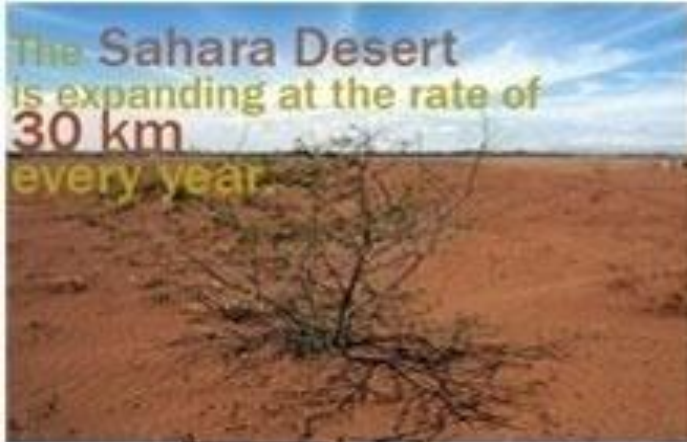
CONSTRUCTION OF PIPELINES ON FARMS



Farmers protest GAIL project, work continues despite resistance. COIMBATORE/ ERODE: Unilateral attempts by Gas Authority of India Ltd (GAIL) to lay its natural gas pipeline through farm lands in seven districts of Western Tamil Nadu, ignoring protests by affected farmers and stifling voices of dissent using police force, have invited stiff resistance across the region.

Deserts grow by 100 square kilo meters every year.

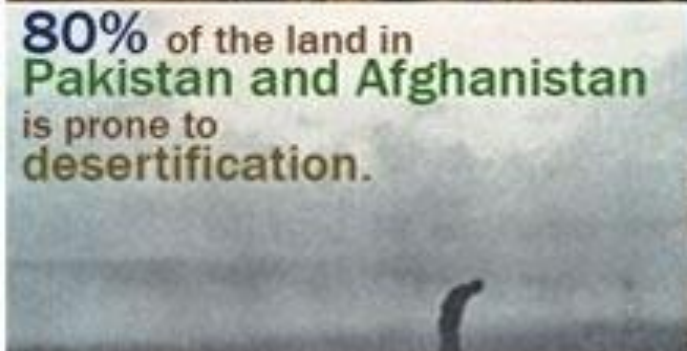
The Sahara Desert
is expanding at the rate of
30 km
every year



Desertification
**The
Common
Cause**



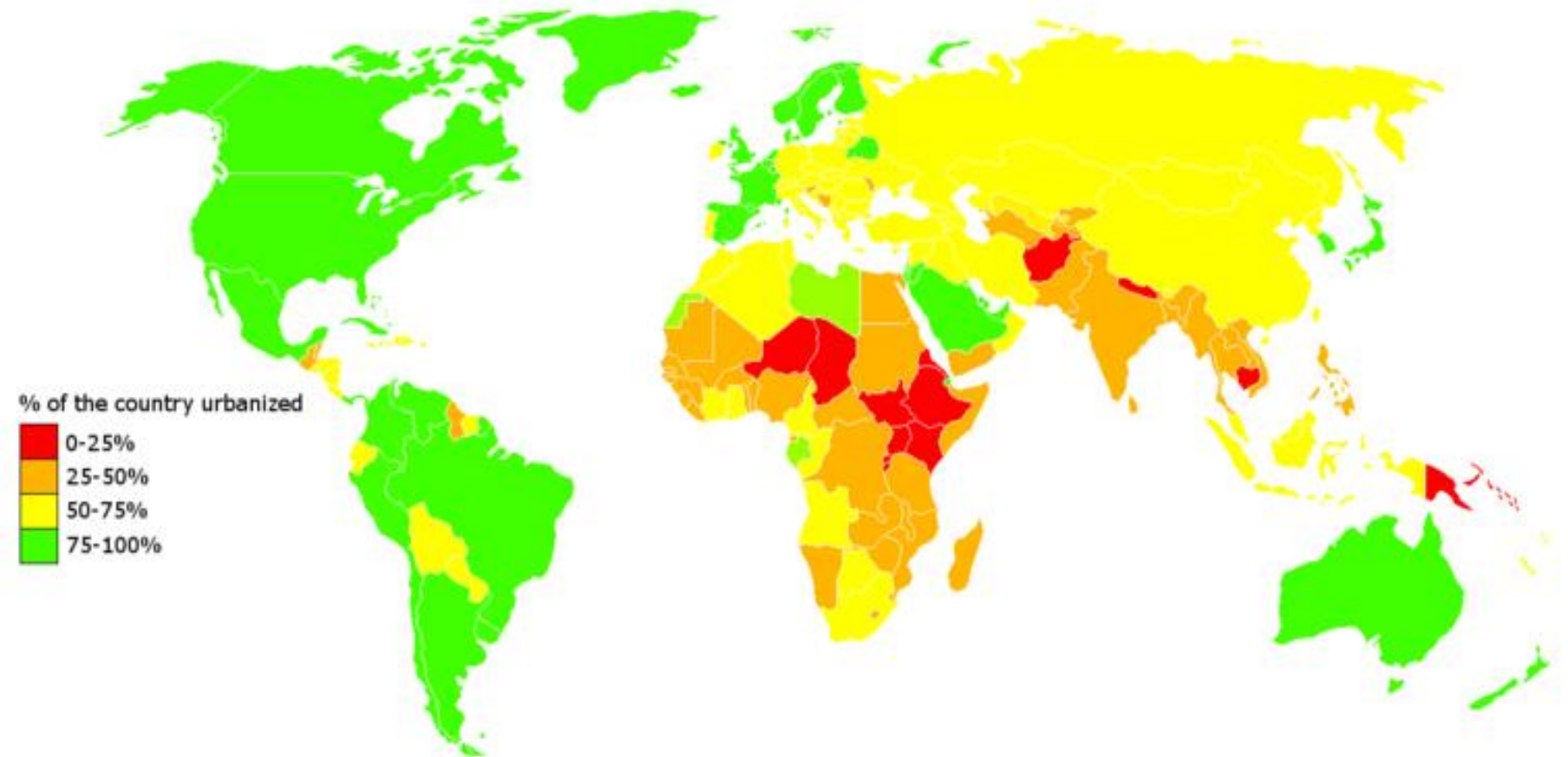
80% of the land in
Pakistan and Afghanistan
is prone to
desertification.



The Aral Sea has shrunk
by **75%** and
Lake Chad by **95%**
since the
1960's



Global urbanization map showing the percentage of urbanization per country



There will be a serious food-shortage in ten years due to (at a glance)

Atmosphere Warming will result in loss of Farm Land due to inundation by Sea and land becoming saline

Soil Warming will reduce farm productivity

Sea Warming will decrease Fish Population

FOOD PROBLEMS AT A GLANCE

Wind Warming will make cyclones , typhoons & hurricanes more violent , virulent , volatile and frequent which in turn will cause destruction of agriculture and forests

Population explosion

Increase in longevity due to better health care

Water issues (see next frame)

Fragmentation land due to succession by heirs

Demand for food will increase due to Population Explosion . MORE BELLIES , LESS FOOD

Loss farmlands due to urbanisation

Construction of Buildings for Houses , Schools , Colleges , Offices , Industries , Parks , Playgrounds , Amusement Parks , atomic power plant , Crematoria , Garbage & Sewage Dump

Construction of Roads , Railroads , laying of Pipelines ,

Farmers are losing interest in Farming, due to various challenges which keep increasing everyday .
Farmers Giving up Farming as it is uneconomical & not viable

Peak Oil (Oil price will sky rocket) will occur which will lead to Peak Fertilizers (Chemical Fertilisers price will sky rocket)

Peak Fertilisers leading to Peak Food (Food prices will sky rocket)

INNOVENTOR
(INNOVATOR+ INVENTOR),
CONCEPT CREATOR, NEOLEXIAN & AUTHOR



Exn Dr Nirmal Basu, **GPian**

7th Sense Master & Trainer (SINCE 1991)

FOUNDER- **ExNoRa** International (1989). 5th Pillar (1997),

7th Sense Society (1999), INNOVENTIONS (1999) & 40 more

INNOVENTOR (**INNOVATOR+ INVENTOR**), (since 1977) of
nearly of 3000 IDEAS, CONCEPTS, SERVICES & PRODUCTS

AUTHOR (since 1964) 14 books & hundreds of articles, stories
& research papers **PHOTO-JOURNALIST** (since 1964)

NEOLEXIAN (coiner of new words) in 3 languages (since 1980)

