

GLOBAL DANGERS

that make
Mother Earth
quite weak



The MAJOR CAUSE
of all categories of
NATURAL DISASTERS
and frequenting
NATURAL CALAMITIES
is
GLOBAL WARMING



Mother Earth who is already
fragile



has become sick
& Weak. She needs our **HELP**



She is crying now which we
see as Natural Calamities &
Disasters

Why the urgent need for the MANTRA "Think Globally", "Act Locally" & "Do Domestically"? . Man has travelled from Stone Age to Disaster Age via garbAGE



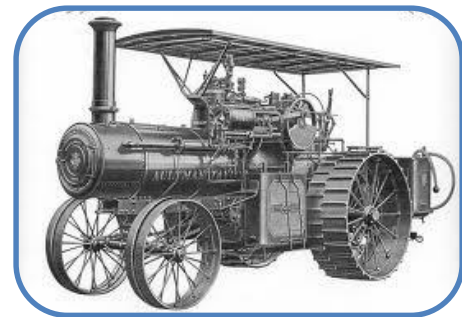
Man Lived in Stone Age



Bronze Age



Copper Age



Iron Age



Computer Age



garbAGE

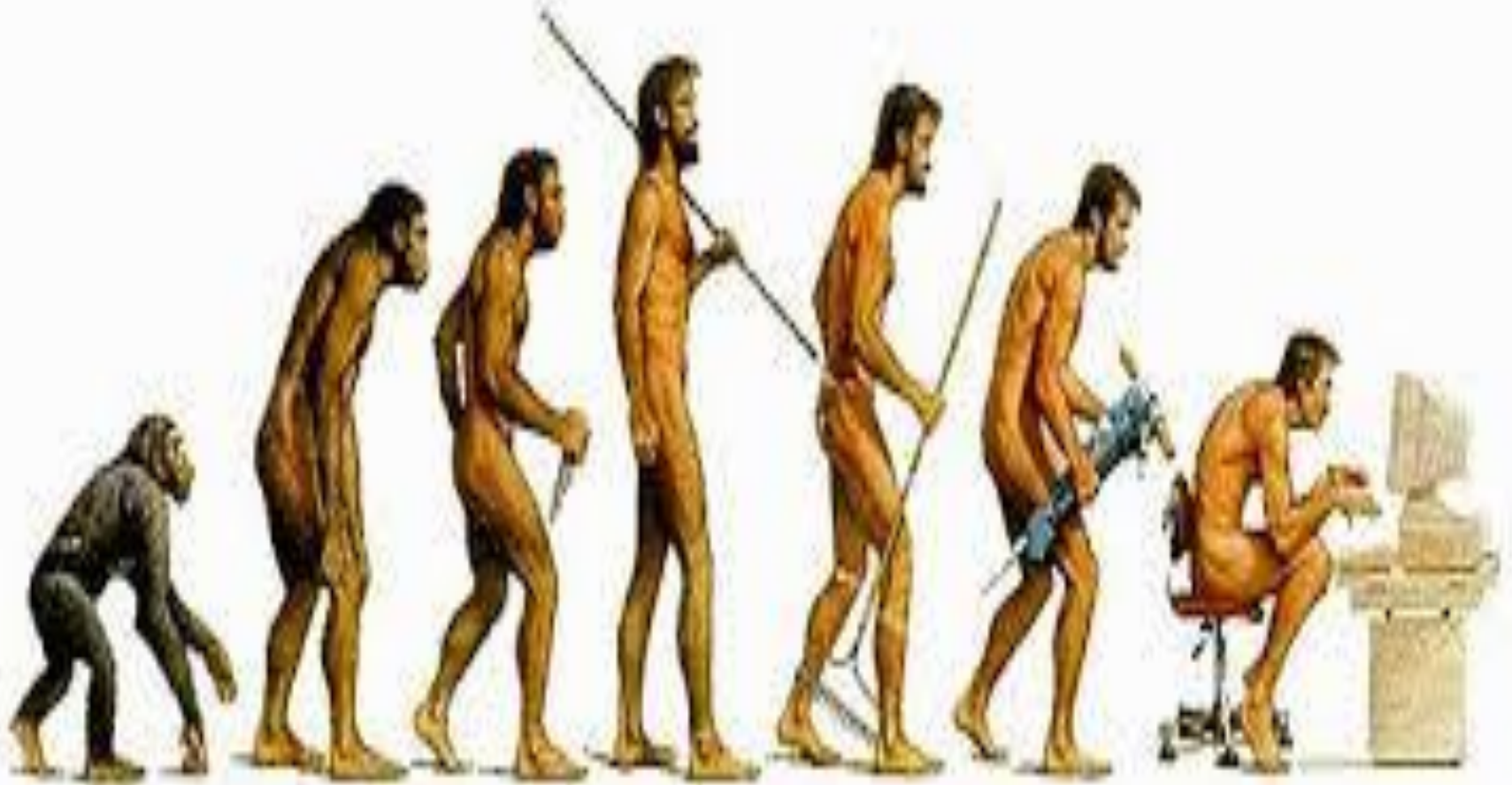


Manmade Disaster Age



Nature Made Catastrophe Age

Man Evolution & Down evolution



SOME DISASTERS OF THE 21ST CENTURY



Tsunami 2004



Hurricane Katrina
USA 2005



China Earthquake
2008



BPL Oil Spill 2010



Thane 2011 uprooted
2 crore trees in



Turkey Earthquake
2011



Sindh Pakistan 2011



Brazil Landslip 2011
killed 500 people



2012 Fiji
Floods



July 2012
Beijing flood



Uttarakhand
flood 2013



Uttarakhand
flood 2013

Hence our role hereafter should be To keep the catastrophes outside, while maintaining order in society **INSIDE**

We are Living in the Age of Catastrophe

NATURAL DISASTER



MANMADE DISASTER



Natural disaster are moreover becoming increasingly difficult to differentiate from "MAN -MADE "

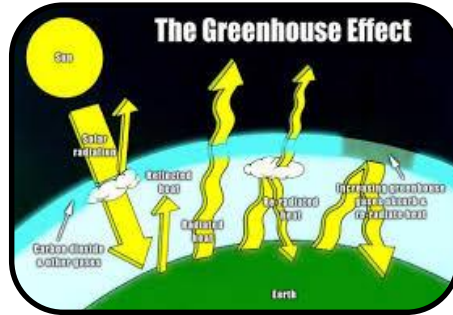
The connection between Air Pollution & Tsunami



We reap what we sow...



Air pollution by Industries, Automobiles & Livestock



The Green House Effect due to burning of coal, petrol & gas + LIVESTOCK



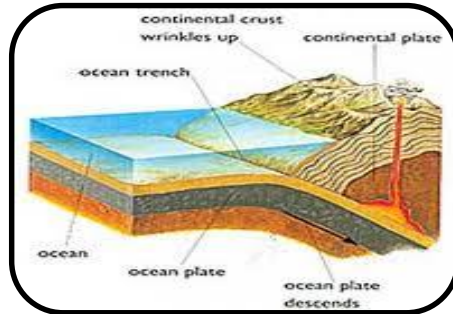
Global Warming



Polar Caps melting due to Global warming



Rising sea level due to melting of polar caps



The weight of increased water acts on the Earth Plates



Earthquake due to increased water weight



Tsunami when the earthquake is over 9 logarithmic scale.

Methane Factory

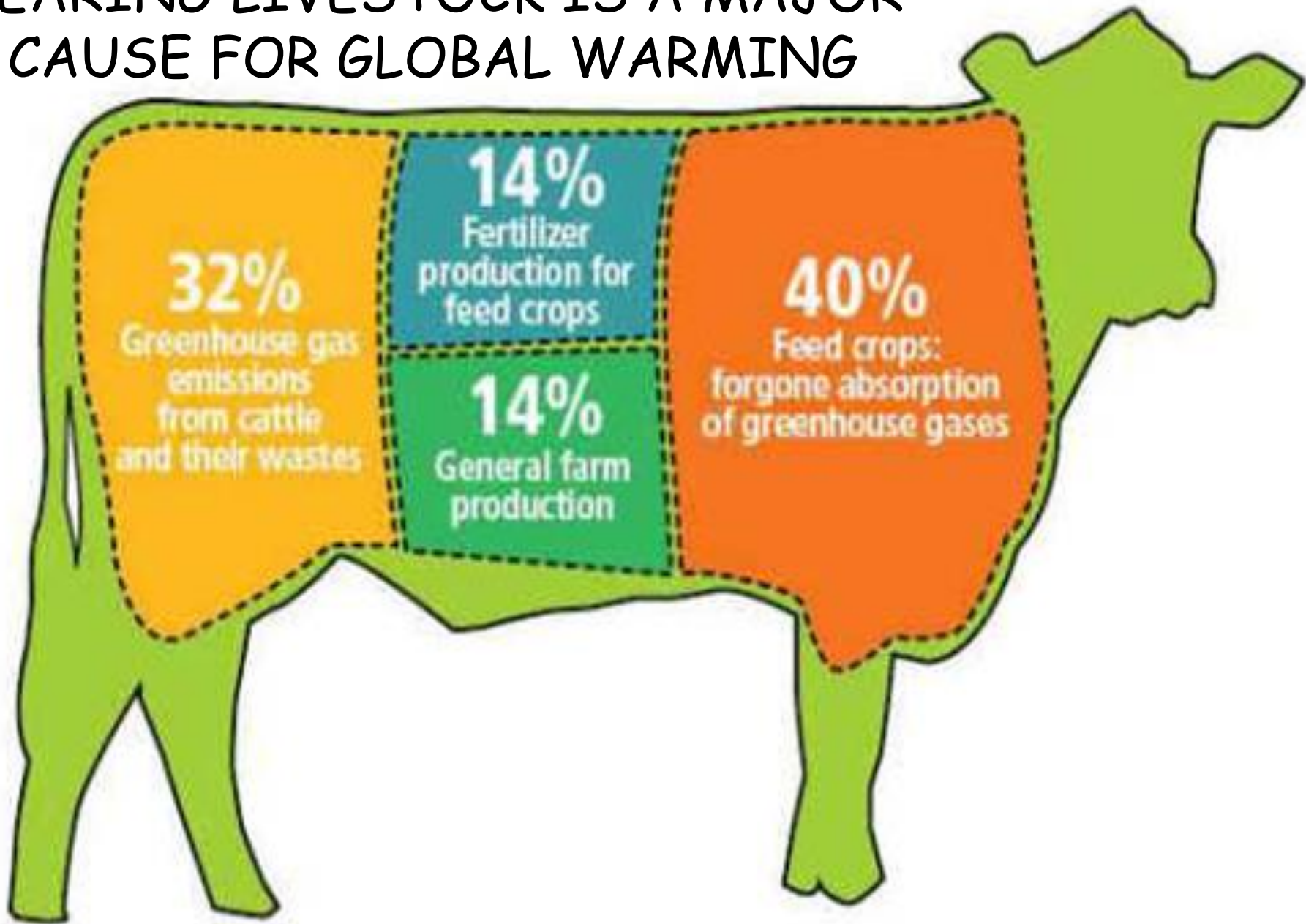


CATTLE produce more than **80 MILLION** metric tons of **METHANE** and are responsible for **28%** of the manmade sources of this devastating greenhouse gas. (Yes each grass-fed, organic "humane" cow produces same as other cattle)

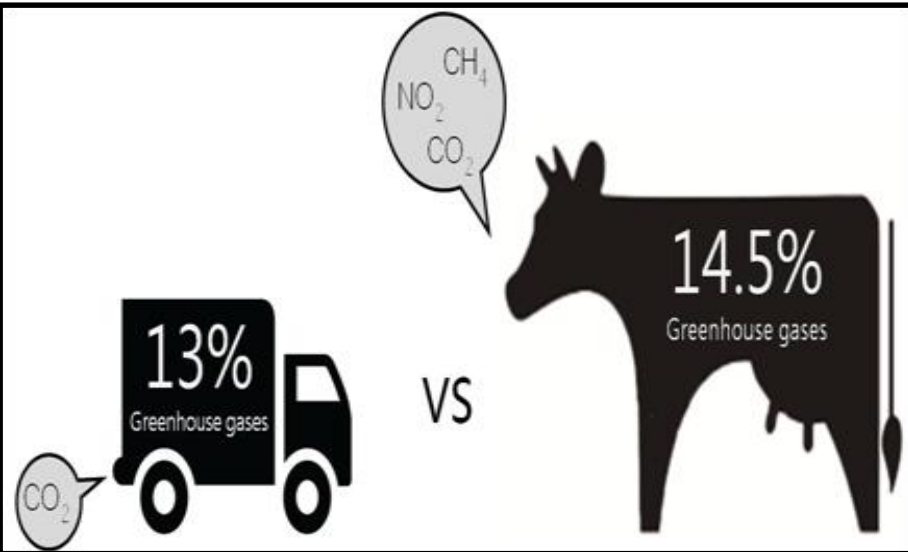
Source: The Journal
of Animal Science

VeganStreet.com

REARING LIVESTOCK IS A MAJOR CAUSE FOR GLOBAL WARMING



REARING LIVESTOCK IS A MAJOR CAUSE FOR GLOBAL WARMING



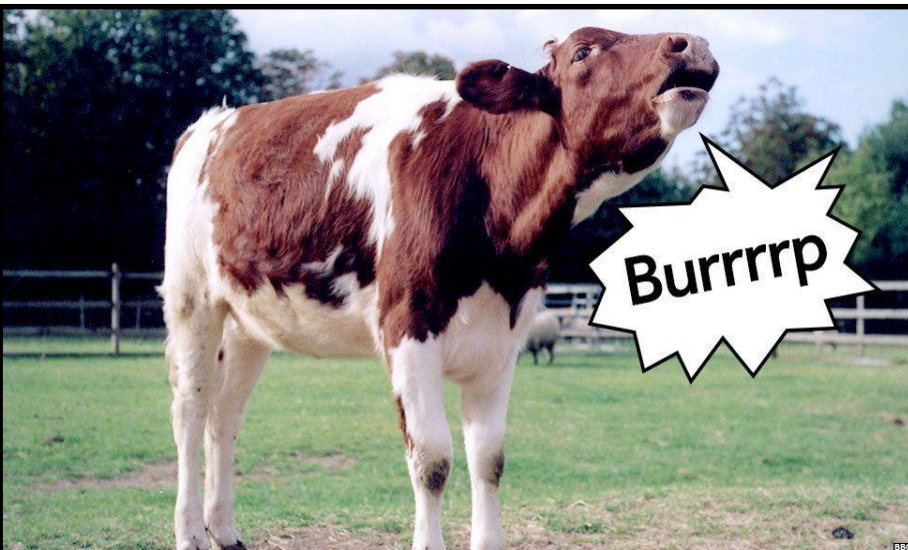
Methane Factory

Cattle produce more than 80 million metric tons of methane, and are responsible for 28% of the world's manmade sources of this devastating greenhouse gas.
(yes, each grass-fed, organic, "humane" cow produces the same as other cattle)

Source: The Journal of Animal Science

VeganStreet.com

A photograph of a black and white cow standing in a green field under a blue sky with clouds.



**A Trillion-Tonne
Iceberg Just Broke
Away From Antarctica,
And Here's Why It
Should Worry Us All**

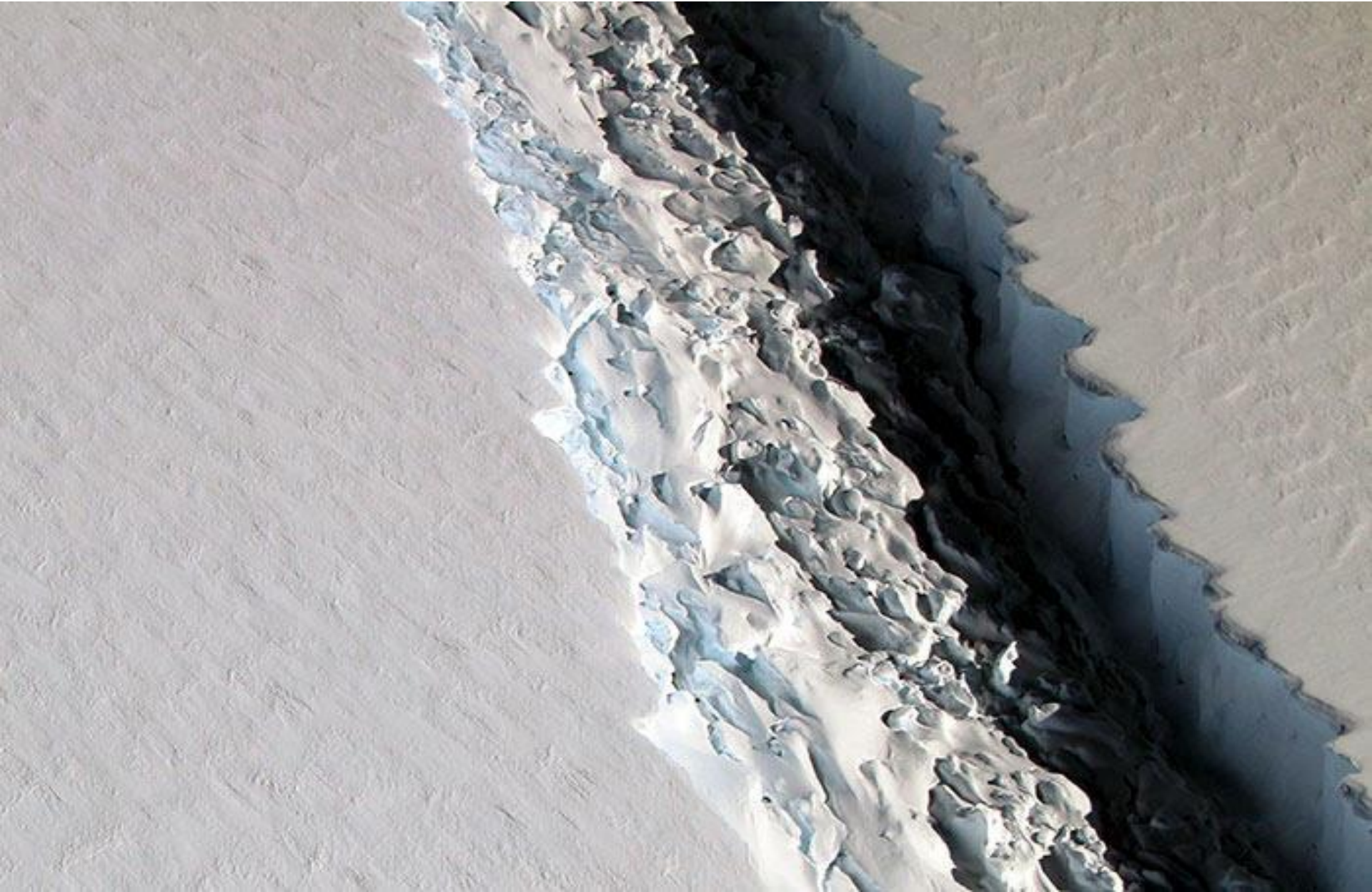
Despite a recent trend of disbelief toward global warming, Mother Nature has just made herself clear. A giant, trillion-tonne iceberg has just broken away from Antarctic ice shelf, and it's an alarm we should all be heeding.

The iceberg, which has an area of roughly 4 times the size of London at 5800 km², was part of an ice sheet known as Larsen C. Researchers at Swansea University had been watching the glacial divide for months, and using satellite imaging, they were able to determine that the iceberg 'calved' (broke away) from Antarctica sometime between July 10th and 12th. Hold on to your Titanic jokes for just a few more minutes, because this is actually the sign of a problem even larger than the berg itself.

Due to the rapid rising of temperatures in West Antarctica, ice shelves are becoming more fragile than ever. Not only does this massive iceberg pose a security risk to maritime traffic, its separation could cause glaciers stabilized by Larsen C to drift into the Atlantic Ocean and melt, which could raise the global water mark by 10 centimeters. The decimation of polar regions also threatens their native species, such as emperor penguins.

See it for yourself below, and read this essay by Adrian Luckman, Swansea University Professor of Glaciology and Remote Sensing.

A massive iceberg has just broken away from Antarctica, and it's making scientists worry for the future



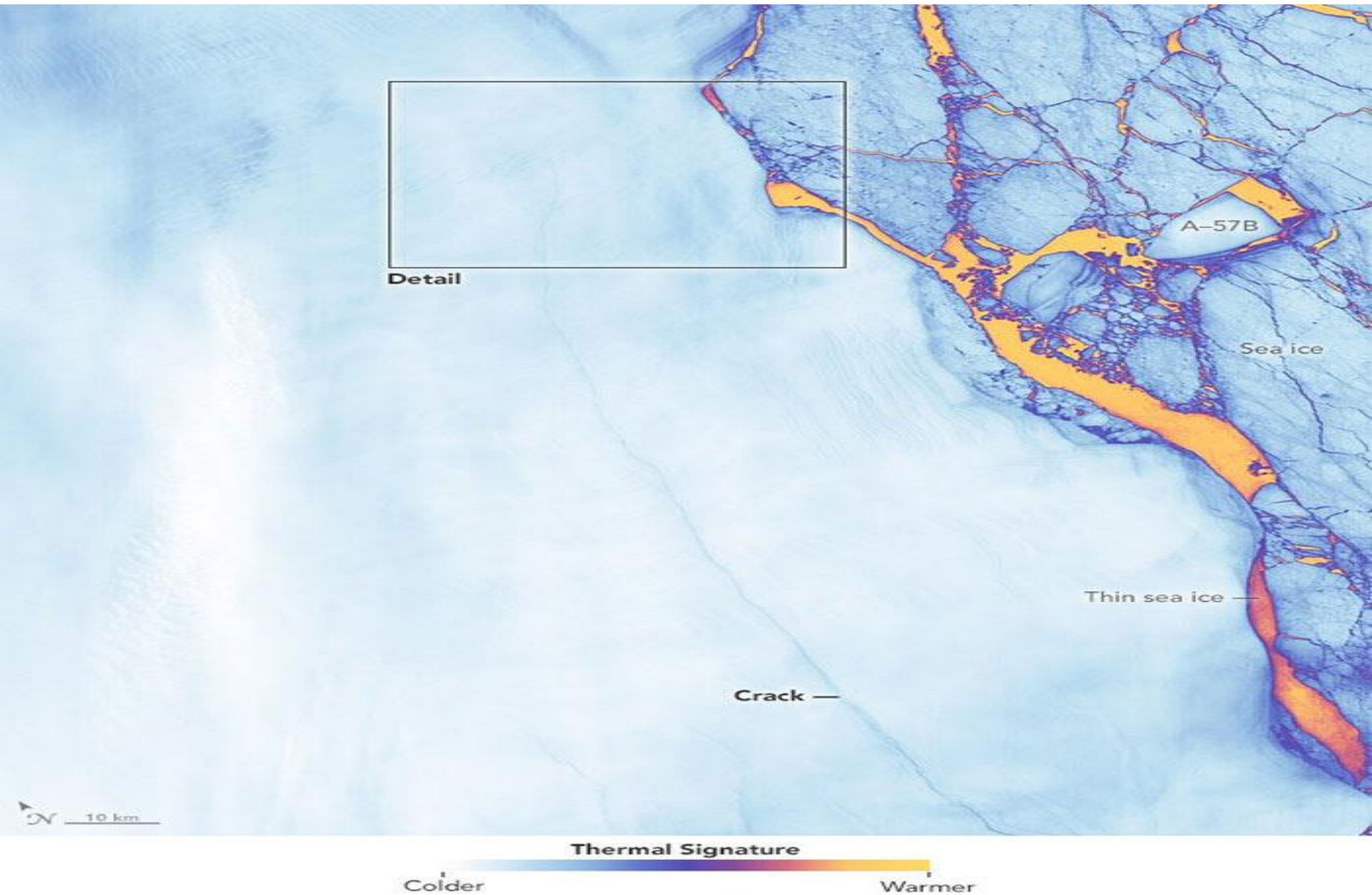
It's estimated to weigh a trillion tonnes, and has an area of 5800 sq km, the size of a small country



**The iceberg detached from the West Antarctic ice shelf
Larsen C, which could now become highly unstable**



Researchers at Swansea University had been watching the glacial divide for months using satellite imagery



Though it may be too early to tell, this fracture in the polar landscape could be the product of global warming



Antarctic temperatures are rising rapidly, causing ice sheets to break apart and drift into the Atlantic Ocean



Polar animal species, like emperor penguins, are also threatened by the slow decimation of their habitats



This giant iceberg will now be monitored intensely, as will the resulting fragility of the glaciers it left behind



Natural and Man-Made Dangers. Some dangers were accelerated by our actions...

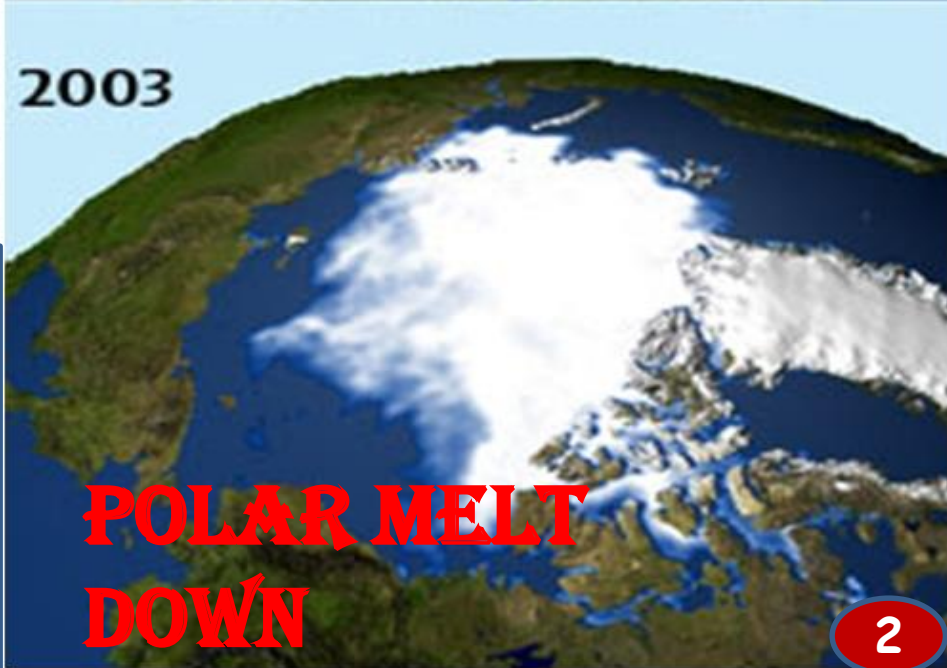
1. Polar Meltdown due to Global Warming

1979



The most dangerous common enemy, Global Warming

2003



POLAR MELT DOWN



Who would save them ?

Ocean levels may rise upto 6.4 ft

The Earth is becoming more earthquake prone every day.
A 10 second earthquake can kill thousands of people.



2. Earthquake



Tsunami is caused by major Earthquakes. Earthquake has increased manifold due to Global Warming . Due to increased weight of melted water from Antarctica , the plates move which results in a Earthquake. Such a natural phenomenon has no discrimination - It kills people of all religions, races, castes, colours or languages destroying millions in a seconds

3. Tsunami

Tsunami

The 2004 tsunami swept 13 countries causing damage over **\$7 billion**

The energy was equaling to 23000 Hiroshima **atom bombs**

It lead over **5 million** home less

And **2.5** people dead

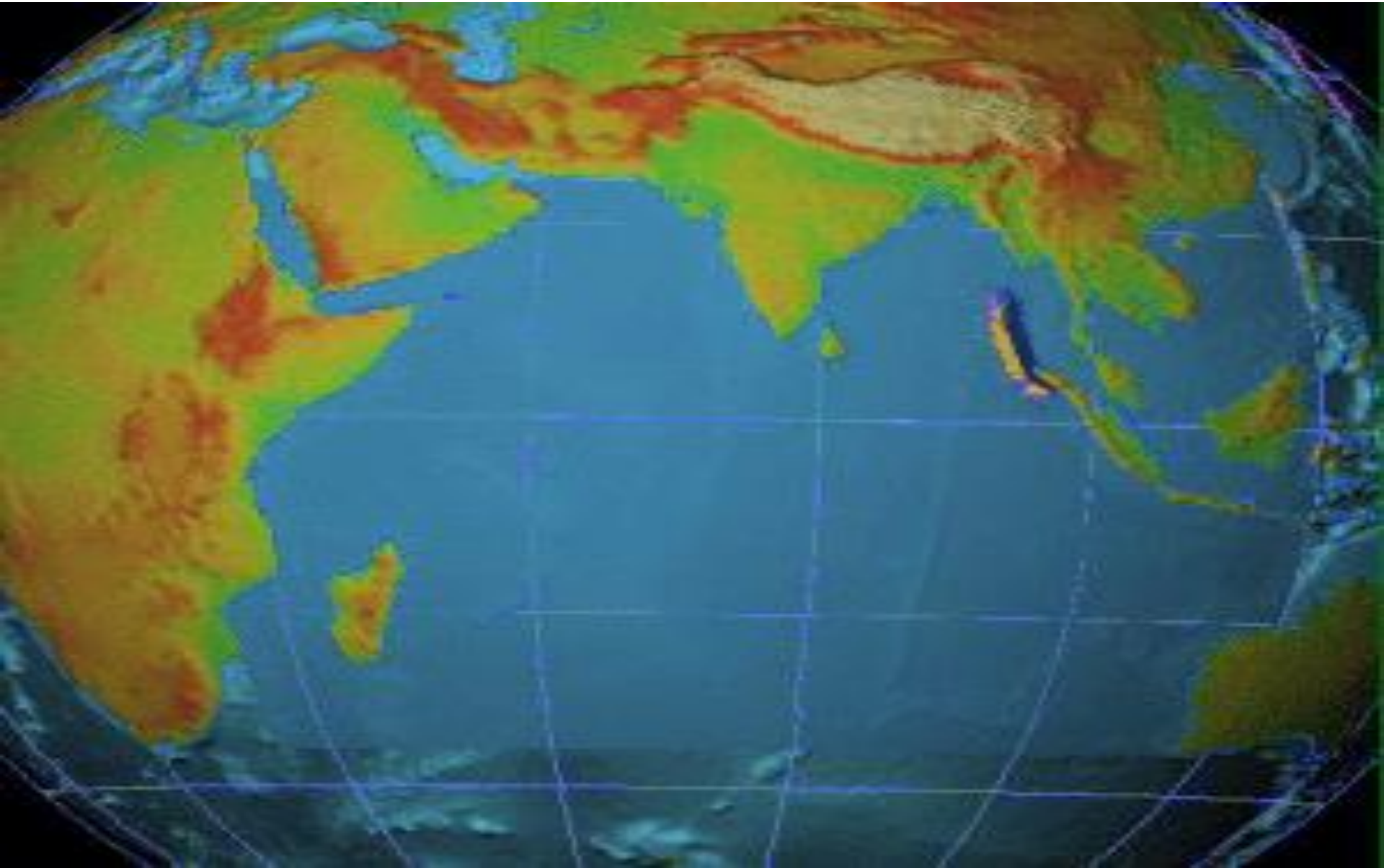
Japan tsunami Sendai March 11th 2011 , the worst happened to human kind. Know Safety from Disaster Preparedness ExNoRa & Safety ExNoRa



3. Tsunami



Tsunami 2004 Indonesia



Deserts grow by 100 square kilometers every year.

4. Desertification

80% of land in Pakistan & Afghanistan are prone to desertification



The Aral sea had shrunk by 75 % and lake Chad by 95 % since 1960



Sahara desert is expanding at the rate of 30 km

5. Cyclones



The cyclone which struck Bangladesh took over **300000 lives**



Katrina hurricane caused an estimated loss of **\$5 billion**



The number of hurricanes that reach categories 4 & 5 which are the most powerful and deadly has **doubled over** the past 35 years due to **sea warming**



The Bengal cyclone of 1991 took over **140000 lives**



6. Floods



Loss on account of floods last year

FLOODS AFFECT 3 CRORE INDIANS EVERY YEAR

Area affected: last year 7,351 million hectares

Human lives lost - 1,793

Cattle lost 85,599

Houses damaged 1,452,904

Value of houses damaged 3.7 billion rupees

Crop area damaged 3.725 million hectares

Value of crop damaged 10,95132 billion rupees

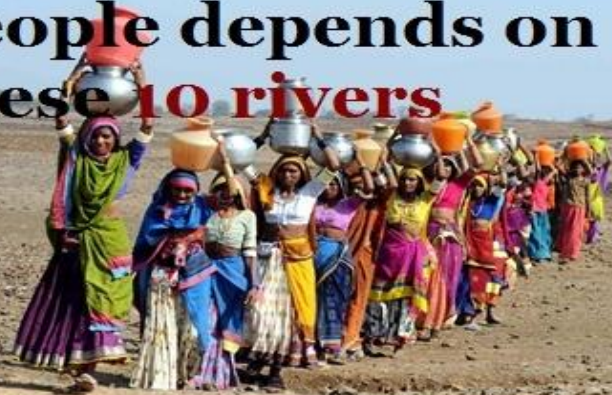
Public Utilities damaged 11.86 billion rupees

Total losses 27.06 billion rupees (\$575 million).

7. Drying & Dying Rivers

Every year, one river dies.

More than **one million** people depends on these **10 rivers**



The river **Ganga** might dry up within the next **25 years**.

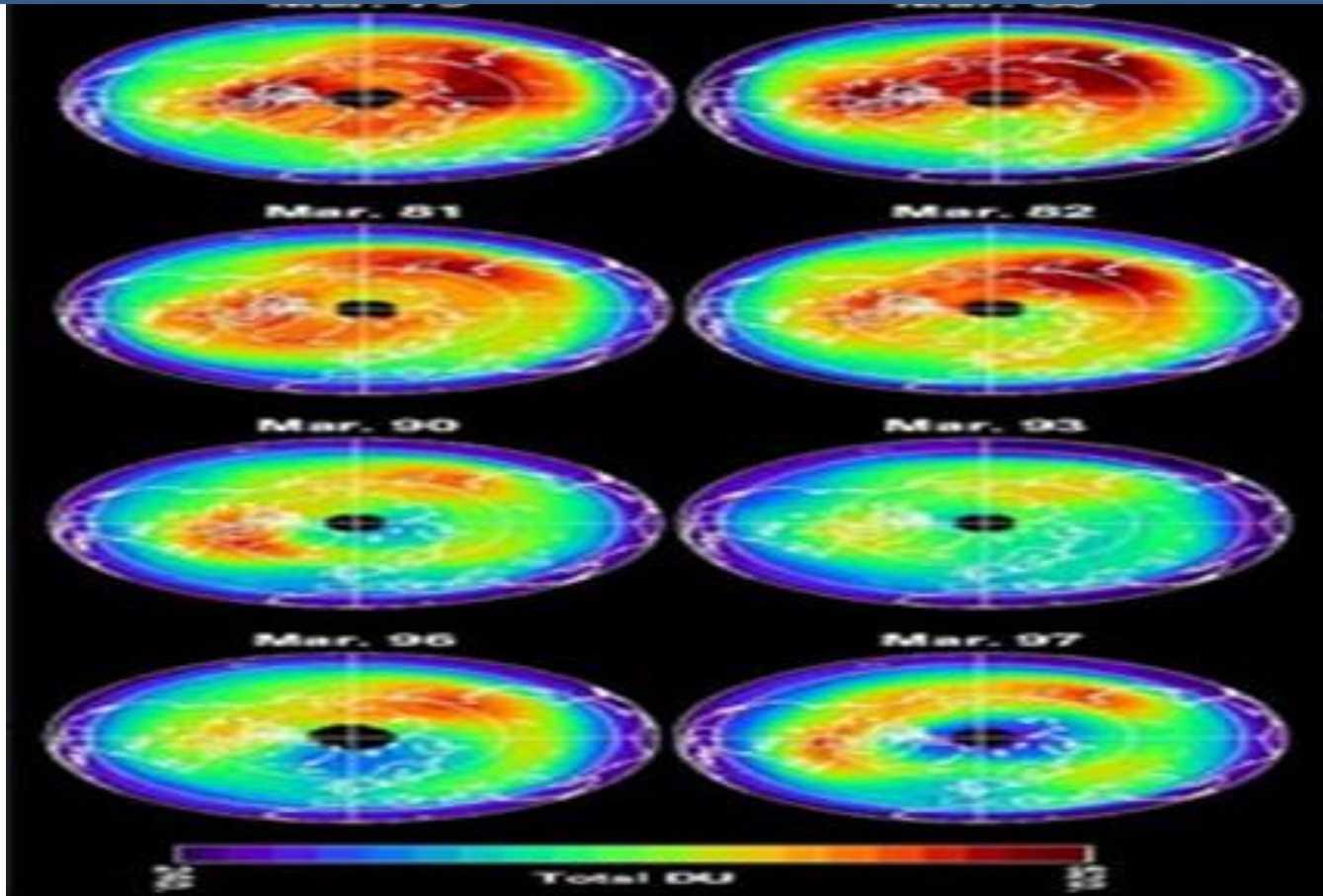


Drying rivers
Dying rivers

Five of the top 10 **drying river** is located in Asia

The **River Ganga** might dry up within **25 years**

8. OZONE HOLE



The Ozone Layer deterioration Over Time.

Image Credit:

**Institute for Studies in Development,
Environment, and Security.**

&

Ozone Depletion

Ozone, the Nature's protective umbrella has now several huge holes essentially due to excessive use of CFCs. As a consequence, more Sun's most harmful U V Rays now reach the planet and cause havoc.

See OZONE CANCER on the left margin for the causes and consequences of the depletion and the holes in the OZONE.

Each year, man made and nature made fires burn millions of hectares of forests worldwide.



In India, every year, wildfires cause a financial loss of upto RS.440 crores



In Canada alone, over 9000 forestfires take place annually.



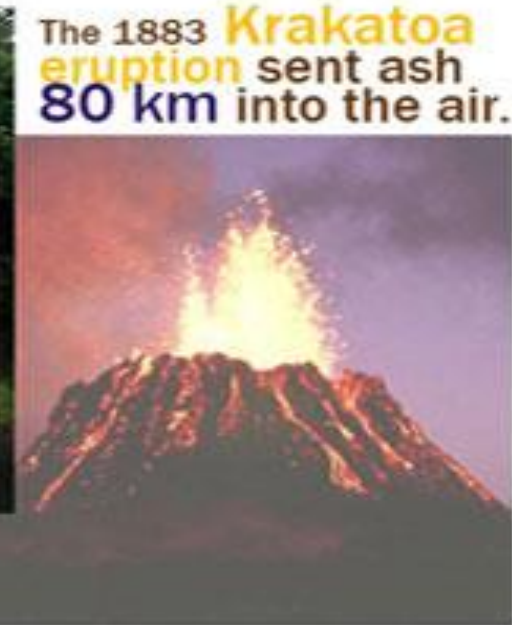
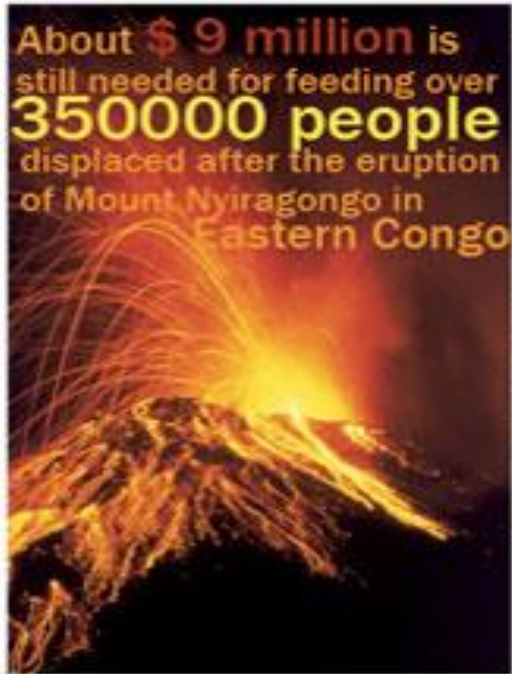
9 Firestorm



Indian forestfires release upto 100 million tons of smoke aerosols into the atmosphere.



Volcanoes release green house gases a heavy ash fall, destroy buildings, cover fields and sometimes take lives. Winds carrying it can reach up to 22,000 square miles.



10. VOLCANO



Our planet is losing 3 species per day due to humans moving to their space.



11. VANISHING WILDLIFE

More than 20% of marine species have died off in recent decades.

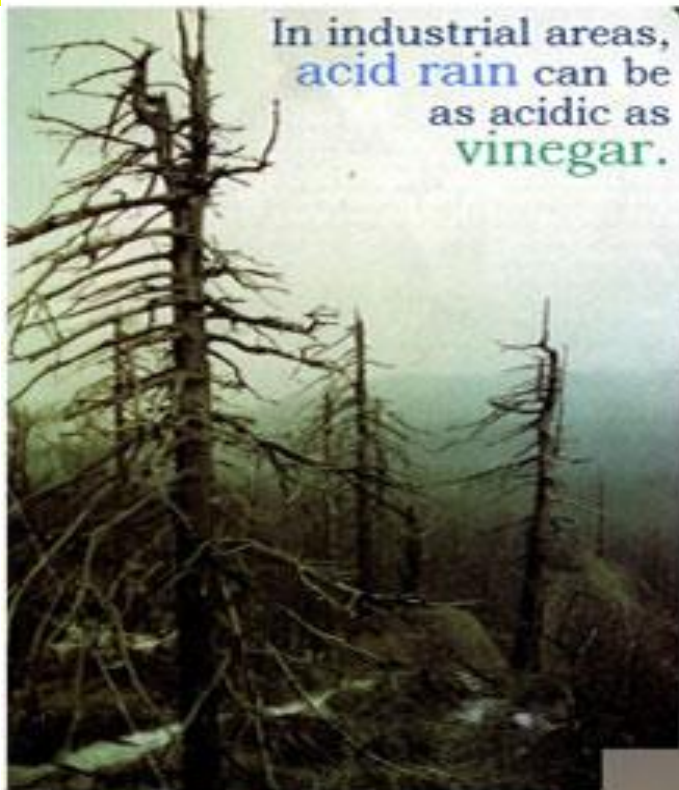
Wildlife



The Common Cause



Acid Rains destroy plant & animals in streams , damages forests & erodes buildings.



12. ACID RAIN

The Common Problem



It has also led to yellowing of Shahjahan's timeless dedication of love.



30 million people die of hunger every year.

The Sydney Morning Herald
 EXTENT OF CRISIS REVEALED
20,000 die each day

Malawi

Extreme poverty (linked with the 2002-03 famine) has caused severe malnutrition, including acute wasting and diarrhoea, leading to a third of the deaths. Another 100,000 people are expected to die from starvation this year.

The three biggest killers - acute malnutrition, diarrhoea and malaria - each nearly tripled from the start of the crisis.

More than 50% of the deaths among young children in the four African countries - Nigeria, the Democratic Republic of Congo, Ethiopia and Tanzania.

France's O'Leary, 55, an Australian and mother in Kilgus with Malawi's last President, said her biggest frustration was the lack of affordable medicines to treat illnesses such as malaria, diarrhoea and cholera - a parasite disease that can be fatal if not treated.

Malawi's 2002 mortality was nearly triple that in 2001, and the majority of Malawians do not have access to basic health care or life-saving drugs as they die, she said.

More than 200 million people - 25 times the population of Australia - have died from poverty-related causes since 1980.

London from the world's only remaining superpower. The UN said deaths increased and spending on health care fell.

The jump in under-nutrition to 15% is a worrying sign, especially in Africa.

The committee is expected to...



Every 3.6 seconds, a person dies of hunger. Of these, 75% are children.



Result Poverty & Hunger



There are over 100 million street children in the world.

NATURAL DISASTERS



AVALANCHES AND MUDSLIDES

An avalanche is a rapid flow of snow down a hill or mountainside.



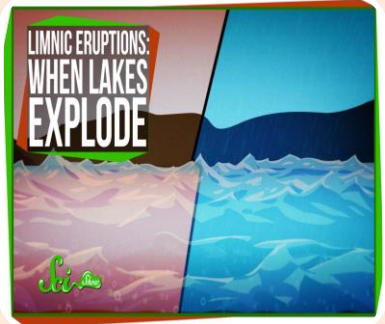
SINKHOLE, When natural erosion or human mining makes the ground too weak to support the structures built on it, the ground can collapse and produce a sinkhole



VOLCANIC ERUPTIONS A volcanic eruption occurs when hot materials are thrown out of a volcano. Lava, rocks, dust, ash and gas compounds are some of the materials.



FLOODS A flood is an overflow of water that 'submerges' land. The EU Floods Directive defines a flood as a temporary covering by water of land which is usually not covered by water

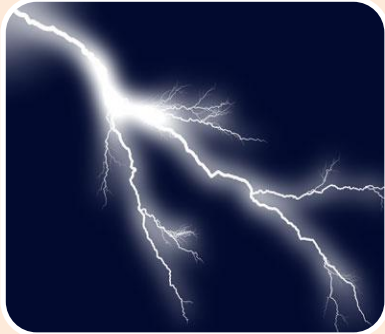


LIMNIC ERUPTIONS A limnic eruption occurs when a gas, usually CO_2 , suddenly erupts from deep lake water, posing the threat of suffocating wildlife, livestock and humans



BLIZZARDS are severe winter storms characterized by heavy snow and strong winds. When high winds stir up snow that has already fallen, it is known as a ground blizzard.

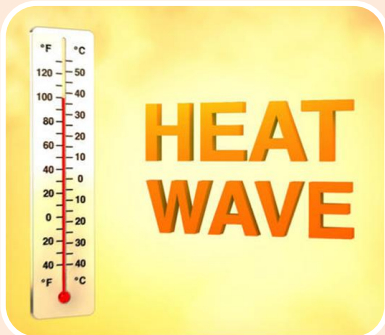
NATURAL DISASTERS



ELECTRICAL STORMS (LIGHTENING) Severe storms, dust clouds and volcanic eruptions can generate lightning. Apart from the damage typically associated with storms, such as winds, hail and flooding, the lightning itself can damage buildings, ignite fires and kill by direct contact



Hailstorms are falls of rain drops that arrive as ice, rather than melting before they hit the ground.



A **heat wave** is a prolonged period of excessively hot weather, which may be accompanied by high humidity, especially in oceanic climate countries..

Ponder over the
"Eco-PROBLEMS-LIST"

shared here !

Save Mother Earth.

ACT fast!



" Easy to Implement
SOLUTIONS"

are also in this presentation

!!!



Accelerating Air Pollution



Bulging Soil Pollution



Deafening Noise Pollution

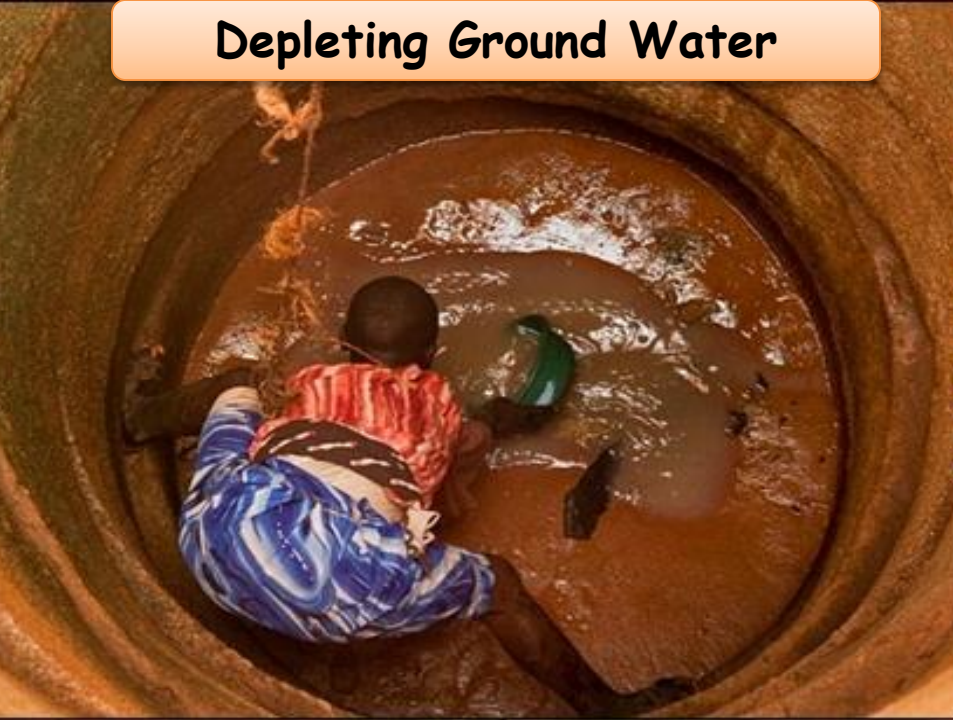


Continuing Coastal Erosions



Decreasing Forest Cover

Depleting Ground Water



Diminishing Natural Resources



Devastating Floods



Disappearing Bio-Diversity



Dwindling Food Sources



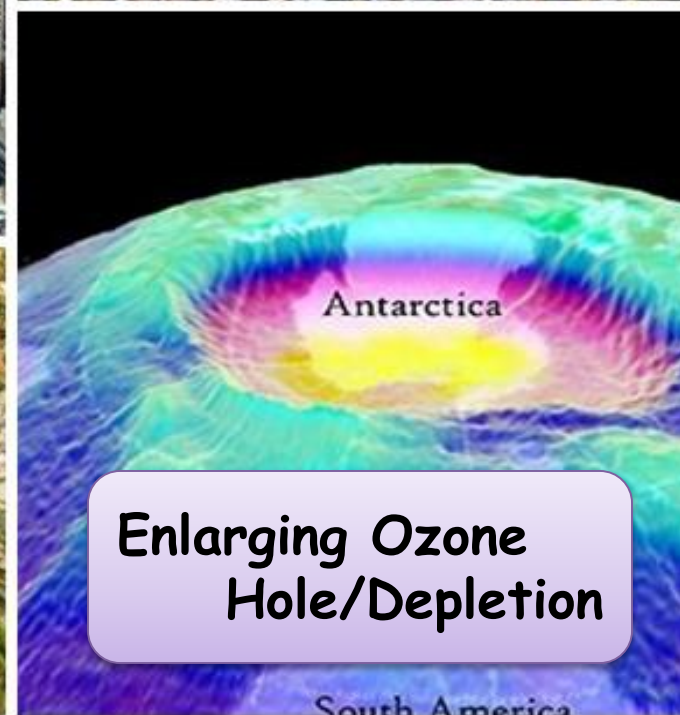
Dying Rivers



Exploding Population



Expanding Concrete Jungles



Enlarging Ozone Hole/Depletion

Eroding Soil



Farm Land becoming Building Lands



Farm Land Cancer due to chemicals



Extinction of Endangered Species



Growing Deserts



Frequenting Volcanoes





Hopping Heat Waves



Increasing Biological Imbalance



Hurrying Hurricanes



Hustling Acid Rains



Hastening Climate Change



Jostling Firestorms



Multiplying Water Pollution



Persisting Global Warming



Melting-fast Polar Caps



Inundating Seas



Sea Water entering Ground Water Shrinking Farm Lands



Snowballing Typhoons



Soaring Tsunamis



Skyrocketing Prices



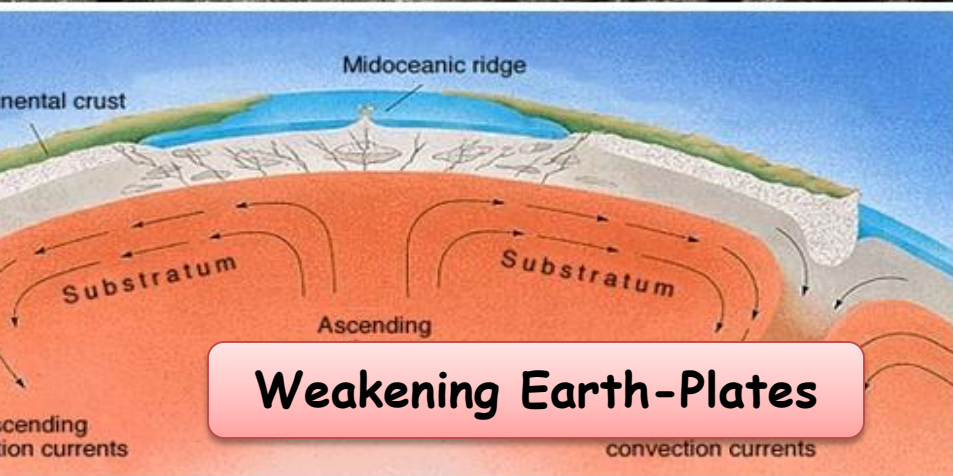
Saturating Water Sources



Withering Nature



Wearing-Down Top Soil



Weakening Earth-Plates



Waning Living Species



Widening Wind Warming

Speeding Soil Warming



Surging Cyclones



Vanishing Wild Life



Swelling Ocean Pollution



Spurt in Surface Water Pollution



Realise **MODEL HOME** (also your office, school & college), **STREET & RESIDENTIAL AREA**. What you need is not money but people motivated as **SOCIAL CAPITAL**?

The **5 HABITS** that will save **3 Ps**, **PERSON**, **PEOPLE** & the **PLANET**



FLOWERING MIND

1. **YOUR HEAD**

"**FLOWERING MIND**" via
"I MY SELF" by "I **ExNoRa**"



HEAVENLY HOME

2. **YOUR DWELLING**

"**HEAVENLY HOME**"** via
"DO DOMESTICALLY" ** by
HOME ExNoRa



STREET a VISUAL TREAT

3. **YOUR STREET**

"**A VISUAL TREAT**" via "ACT
LOCALLY" by **RWA ExNoRa**



AREA "WA REH WAH"

4. **YOUR AREA "WA REH WAH"** via **RENDER COLLECTIVELY** by **ExNoRa INNOVATORS CLUB**



PLANET PARADISE

5. **YOUR PLANET "PLANT-NET"** via
"THINK GLOBALLY" before you do
anything by **ExNoRa INNOVATORS INTERNATIONAL**



exnora@gmail.com
SMS + 91 98400 34900
www.exnorainnovators.club
www.exnora.innovators.club
FB **ExNoRa** Innovators Club

** Do Domestically includes your dwelling , your place of learning & your place of work. **Jeevan Shastra**, **Life Science** & **Manushya Shastra**, **Human Science**

INNOVENTOR
(INNOVATOR+ INVENTOR),
CONCEPT CREATOR, NEOLEXIAN & AUTHOR



Exn Dr Nirmal Basu, **GPian**

7th Sense Master & Trainer (SINCE 1991)

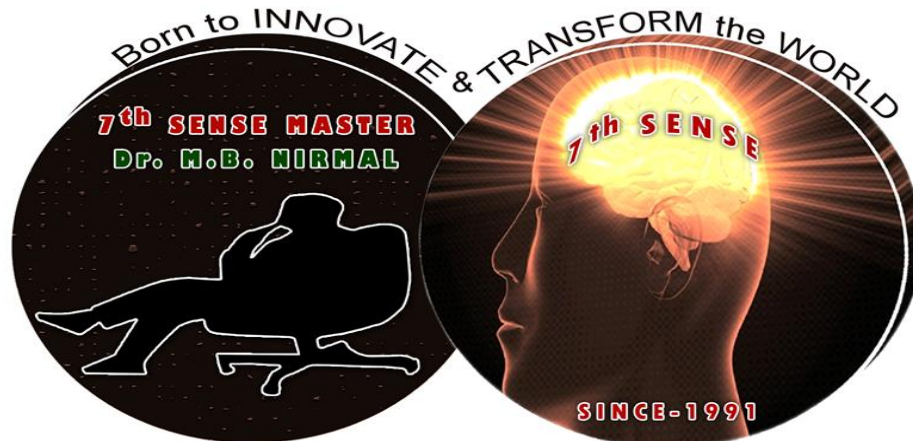
FOUNDER- **ExNoRa** International (1989). 5th Pillar (1997),

7th Sense Society (1999), INNOVENTIONS (1999) & 40 more

INNOVENTOR (**INNOVATOR+ INVENTOR**), (since 1977) of
nearly of 3000 IDEAS, CONCEPTS, SERVICES & PRODUCTS

AUTHOR (since 1964) 14 books & hundreds of articles, stories
& research papers **PHOTO-JOURNALIST** (since 1964)

NEOLEXIAN (coiner of new words) in 3 languages (since 1980)



WEBSITES

PPTs

DVDs

YouTube &
FLASH

E BOOKS &
E BROCHURES

ONLINE
COMMUNITIES

CONTACT DETAILS :

Exn Dr. Nirmal Basu **GPian**
7th SENSE MASTER & TRAINER
Founder, **ExNoRa** INNNOVATORS
INTERNATIONAL
+91 98400 34900 /+ 91 44 2363 8383
www.7thsense.guru
www.exnorainnovators.club
exnora@gmail.com

www.exnorainnovators.club www.exnora-innovators.club

facebook

twitter™

LinkedIn®

You
Tube

[www.facebook.com/
nirmal.exnora](http://www.facebook.com/nirmal.exnora)

[twitter.com
/mbnirmal](https://twitter.com/mbnirmal)

[www.linkedin.
com/in/mbnir
mal](http://www.linkedin.com/in/mbnirmal)

SEARCH
Nirmal MB